

Vito Tourer



Mercedes-Benz
Vans. Born to run.



The Vito Tourer.

Runs on ambition.





You want to be ready to get going at any moment? Can't resist new challenges? You're committed to your job? Then the Vito Tourer is the ideal vehicle for you. The Vito Tourer will take you further – both on the road and in terms of the success of your business. Its versatility and safety are just as exemplary as its economy and quality. It is, quite simply, the specialist for professional passenger transport – delivered by a genuine commercial vehicle specialist.

With fuel consumption potentially as low as 5.8 l per 100 km¹, it is more economical than ever. Thanks to innovative assistance and safety systems, the journey to your various destinations is also even safer. Whether with front-wheel, rear-wheel or all-wheel drive, as a Vito Tourer BASE, PRO or SELECT: you simply choose the best vehicle to suit your needs.

An extensive network of authorised Mercedes-Benz dealers provides a comprehensive range of services to ensure that your Vito retains its robust reliability over the long term. Put your maintenance and repair needs in the hands of Mercedes-Benz Service. The people who know your vehicle best. So ensuring that the Vito Tourer remains a valued partner for many years.

Mercedes-Benz Vans. Born to run.

¹ For the Vito Tourer 116 CDI with BlueEFFICIENCY package, 7G-TRONIC PLUS and registration as a passenger car (M1). Detailed information about the consumption figures may be found in the section "Technical data".

Contents.

| | | | |
|---|-----------|-------------------------------------|-----------|
| The Vito Tourer | 2 | Drive variants | 26 |
| | | Front-wheel and rear-wheel drive | 26 |
| Flexibility | 6 | All-wheel drive | 27 |
| | | Engines | 28 |
| Reliability and economy | 8 | | |
| Safety | 10 | Equipment | 29 |
| | | Paintwork and upholstery | 29 |
| Suspension and drive configuration | 14 | Standard and special equipment | 30 |
| | | Genuine Accessories | 35 |
| Interior | 16 | Services | 36 |
| Models | 18 | Technical data | 40 |
| Vito Tourer BASE | 18 | | |
| Vito Tourer PRO | 20 | Fuel consumption | 42 |
| Vito Tourer SELECT | 22 | and CO₂ emissions | |
| Seating variants | 24 | Test drive | 43 |







The direct route
to success.



Wherever you're heading: the Vito Tourer will help make sure you get there successfully. The three models BASE, PRO and SELECT can be configured precisely to suit your needs and those of your passengers. If what you need is a superbly comfortable vehicle for tourist travel or as a hotel shuttle bus, the Vito Tourer SELECT with two adjustable 3-seater bench seats is the best option. Perhaps with some extra light and air for your passengers, courtesy of the optional panoramic sliding sunroof. Are you after a particularly versatile taxi, or a vehicle for your local club? In which case take a look at the Vito Tourer PRO. If you need a means of transporting your work crew to where they're needed, the functional Vito Tourer BASE could be just the vehicle for you.

Depending on the vehicle length, there's space for 2, or in the extra-long version even 3, rows of seats fitted with 2-seater and 3-seater benches. To accommodate the maximum 9 occupants, you can choose either 3 rows of seats in the passenger compartment (2-2-3 seats) or opt for the co-driver's bench seat and two 3-seater benches in the rear. And best of all, the versatility of the Vito Tourer is a great advantage outside working hours too.

Experience

your very own economic miracle.





The sparing use of resources is a quality that is welcomed in any company. And the economic efficiency of the Vito Tourer is sure to add to the success of your company. Compared with similar engine variants in the previous model series, fuel savings are 20% on average, meaning that your consumption comes down to a figure from 5.8 l per 100 km¹. It's a figure that sets standards. As do the reliability and durability that are such hallmarks of Mercedes-Benz, ensuring that your Vito Tourer is always there when you need it. Long service intervals of up to 40,000 km also play their part in this respect. All in all, the outstanding product quality provides the very best basis for keeping the maintenance and repair budget low. In order to ensure that, even after many years in operation, the Vito Tourer's looks still match its performance, we have given it excellent protection against corrosion, including a fully galvanised body.

The BlueEFFICIENCY package² reduces fuel consumption and CO₂ emissions with the following measures:

ECO start/stop function temporarily switches off the engine when the vehicle is stationary.

The improved-efficiency Fuel Efficiency alternator reduces the strain on the engine.

¹ For the Vito Tourer 116 CDI with BlueEFFICIENCY package, 7G-TRONIC PLUS and registration as a passenger car (M1). Detailed information about the consumption figures may be found in the section "Technical data". ² Standard with the Vito Tourer 119 CDI and with automatic transmission in conjunction with registration as a passenger car (M1). Detailed information about the consumption figures may be found in the section "Technical data".

Reach your destination.

In exemplary safety.

01

01

COLLISION PREVENTION ASSIST combines a proximity and collision warning with Brake Assist BAS PRO.

02

02

Lane Keeping Assist can help to avoid accidents resulting from the vehicle unintentionally leaving its lane.

03

Blind Spot Assist can help to avoid accidents when changing lane, for example on motorways.

04

The **reversing camera** shows a photorealistic image of your surroundings with dynamic guide lines and an indication of the direction of travel.

05

The **LED Intelligent Light System** adapts the lights variably to the light, road and weather conditions.

06

The standard **Crosswind Assist** function helps prevent lateral displacement in the event of gusting side winds.

07

The anticipatory occupant protection system **PRE-SAFE®** is able to detect critical driving situations at an early stage and initiate precautionary occupant protection measures.

07

08

05

06



04

03

08

ATTENTION ASSIST can enhance handling safety and help prevent microsleep, as it is able to recognise typical signs of fatigue or inattention.

The exemplary safety and assistance systems in the Vito Tourer bring benefits for everyone: your passengers, you and even other road users. These include the standard-fit assistance systems Crosswind Assist and ATTENTION ASSIST drowsiness detection, the latest generation of the Electronic Stability Program ADAPTIVE ESP® and the protection of up to 6 airbags¹. In addition, the QR code rescue sticker on the B-pillar allows the emergency services to scan the rescue card for the specific vehicle.

One highlight is the optional COLLISION PREVENTION ASSIST, which continually monitors the distance between your vehicle and the vehicle in front, even outside built-up areas, and warns of a potential collision. A reversing camera and the anticipatory occupant protection system PRE-SAFE® are optionally available. If you would like to add to the safety equipment on board your Vito Tourer, you're sure to find what you need among our range of further safety features². They all have one thing in common: they are there to help you reach your destinations more safely.

| | Driving Assistance package | Lane Tracking package |
|-----------------------------|----------------------------|-----------------------|
| COLLISION PREVENTION ASSIST | • | – |
| Lane Keeping Assist | • | • |
| Blind Spot Assist | • | • |

¹ The airbags for the driver and co-driver and the thorax/pelvis sidebags and windowbags in the front form part of the standard-fit safety equipment for the Vito Tourer PRO and the Vito Tourer SELECT. ² See "Standard and special equipment, Safety", or www.mercedes-benz.com



Always ready to help.



To stay on course for success over the long term, you need to look ahead. Which is why the Vito Tourer offers a unique range of assistance systems, as you would expect from a Mercedes-Benz van. The optional COLLISION PREVENTION ASSIST system, for example, constantly monitors the distance between your vehicle and the one ahead, gives you visual and audible warnings of an imminent collision and, if you brake, automatically boosts the braking power, should this be necessary. It can therefore help you to avoid rear-end collisions – on the motorway, on cross-country journeys or in town. And because so many trips involve parking as well, the optional Active Parking Assist will help you with this too, if you so wish. This system can also warn you if it identifies that there's not enough space for parking and manoeuvring.



COLLISION PREVENTION ASSIST combines a proximity and collision warning with the BAS PRO brake assist function.

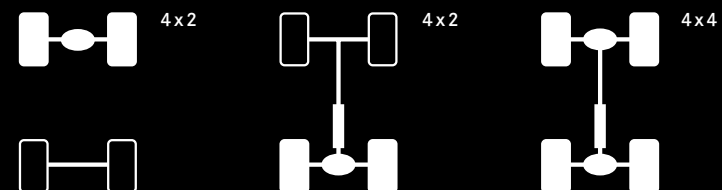


As varied
as your journeys.



Anyone can arrive. The trick is to keep going. Which is why the Vito Tourer is the first van in its class to come with a choice of 3 drive variants: front-wheel, rear-wheel and all-wheel drive. It all depends on what you're planning and where you're going: choose the drive variant that best suits the sort of work you do and the driving characteristics you want. That way, your Vito Tourer will keep you going where others fail.

Along the way, the optional 7-speed automatic transmission 7G-TRONIC PLUS¹ will give you excellent ride comfort and low fuel consumption figures. The standard 6-speed manual transmission also offers an impressively good balance between agility and efficiency. But no matter which drive variant you opt for: with the standard-specification electromechanical power steering, the comfortable chassis and suspension set-up and the independent suspension, you can enjoy passenger-car levels of efficiency, smooth running and ride comfort in the Vito Tourer.



The Vito Tourer is the first van in its class to offer three drive variants: front-wheel, rear-wheel and all-wheel drive.

¹ Available for rear-wheel and all-wheel drive.



This is where
work becomes enjoyable.



Let's turn to the pleasant part of your job: the spacious interior of the Vito Tourer will put you in the best mood for working. With their robust upholstery fabric and ergonomic cushioning, the seats remain comfortable even during long journeys. Seat heating for driver and co-driver is an option worth thinking about for the colder weather. The optional co-driver's bench seat gives you room for 2 people alongside the driver.

Thanks to electromechanical power steering and the options of cruise control, multifunction steering wheel with adjustable steering column and trip computer, you will have no problems getting to where you're needed. The optional air conditioning system or automatic climate control, too, will help you to keep a cool head.

The various audio systems that are available as options ensure excellent connections and entertainment while on the move and work in conjunction with the Becker® MAP PILOT¹ navigation system to ensure that you reach your destination more quickly. Should you wish to enhance the appeal of your Vito Tourer still further, order the optional Interior Chrome package². And because every successful venture starts with a good filing system, we have equipped the Vito Tourer with a host of practical stowage compartments.

Diverse range of equipment and appointments³

| |
|---|
| 3-spoke multifunction steering wheel with trip computer ⁴ |
| Interior Chrome package ⁴ : chrome trim on dashboard and door panelling |
| TEMPMATIC air conditioning ⁴ |
| Information and communication systems such as the optional Audio 10 and Audio 15 radios and the Becker® MAP PILOT navigation system (only available in conjunction with Audio 15) |
| Comfort seats for driver/co-driver ⁴ |
| Seat heating for driver/co-driver |

¹ Becker® MAP PILOT navigation system only available in conj. w. Audio 15. ² The Interior Chrome package is included in the specification of the Vito Tourer SELECT. ³ Optional extra in some cases. ⁴ Standard with the Vito Tourer SELECT.

The functional option: Vito Tourer BASE.

The Vito Tourer BASE is a robust and reliable partner for impressively economical passenger transport. While helping to make savings, it is itself extremely generous. This is particularly true of the space it offers, with room for up to 9 people on board when the maximum number of seats is fitted. The standard specification also includes the assistance systems ATTENTION ASSIST, Crosswind Assist and Hill-Start Assist, as well as safety features such as the tyre pressure monitoring system¹ and airbags for driver and co-driver as standard.

The wooden floors and the side wall and roof panelling are particularly robust, using hardboard panels which can cope with heavy-duty use. All in all, the Vito Tourer BASE has what it takes to be a reliable partner for your business for many years to come.

The standard equipment of the Vito Tourer BASE includes:

Exterior

40.6 cm (16-inch) steel wheels, 6.5 J x 16 ET 52 with size 195/65 R16 tyres

6-speed manual transmission

Electro-mechanical steering system

Standard suspension Plus or comfort suspension in conj. w. rear-wheel drive

Interior

Lockable and illuminated glove compartment

Airbags for driver and passenger

Driver's and co-driver's seat with manual adjustment and attractive fabric upholstery

Seat belt warning for driver and co-driver

Tailgate with window and wipe/wash system

Wooden floor in passenger compartment

Sidewall and door panelling in passenger compartment with hardboard panels

Seat mounts in passenger compartment with quick-release attachment system for 2 seat rows



The standard Crosswind Assist function helps prevent lateral displacement in the event of gusty side wind.



ATTENTION ASSIST, a standard feature, is able to detect the typical signs of fatigue based on numerous parameters and so warn the driver.

¹ Tyre pressure monitoring system as standard in conj. w. registration as a passenger car (M1).



The Vito Tourer BASE passenger compartment can be arranged as required; for example with the 2-seater bench seat in the first and the 3-seater bench seat in the second row. The 2-seater bench seat allows generous access towards the rear. All the seats feature integrated three-point seat belts and height-adjustable head restraints. Appropriate child seats can be fitted on up to four seats using ISOFIX child seat attachment points.

The multitalented option: Vito Tourer PRO.



As standard, the Vito Tourer PRO has room for six passengers in the passenger compartment. The outside seat with EASY-ENTRY function enables comfortable access to the second seat row. If required the outer seat can also be removed completely. All the seats feature integrated three-point seat belts as well as height-adjustable head restraints. Four seats can be equipped with ISOFIX child seat attachment points.



The steering wheel is adjustable for tilt and height to allow drivers of different sizes to adopt an individual, ergonomic posture.



The superior trim makes the interior more attractive and offers additional stowage space.

The Vito Tourer PRO seats 8 as standard. The adaptable seating means that it can also be transformed into a 5-seater, 4-seater or 2-seater. This flexibility is the result of the seat mounts in the passenger compartment with their quick-release attachment system. If bulky items need to be transported, removing the bench seats quickly transforms the passenger compartment into a spacious load compartment. The steering wheel, adjustable for tilt and height, and the electrically adjustable, heated exterior mirrors make life more comfortable for the driver, while heat-insulating windows all round and practical stowage compartments in the side wall panelling enhance the comfort of everyone in the passenger compartment.

Enhancements to standard equipment for the Vito Tourer PRO compared with the Vito Tourer BASE (selection):

| |
|--|
| Exterior |
| Heated and electrically adjustable exterior mirrors |
| Tinted glass all round |
| Interior |
| 3-seater bench in 1 st row of passenger compartment with a folding and removable outer seat |
| 3-seater bench in 2 nd row of passenger compartment |
| Illuminated mirrors on sun visors |
| Overhead control panel with interior light |
| Fabric roof trim |
| Synthetic floor in passenger compartment, dirt-resistant and easy to clean |
| Steering wheel adjustable for tilt and height |
| Pre-installation for radio with 2-way loudspeakers in front |
| Injection-moulded sidewall and door trim in passenger compartment with practical stowage compartments |
| Thorax/pelvis sidebags and windowbags in front |

The cossetting option: Vito Tourer SELECT.

The Vito Tourer SELECT is the specialist for particularly comfortable passenger transport. Its attractive exterior with 40.6 cm (16-inch) light-alloy wheels and bumpers painted in body colour invites you to step inside. In the passenger compartment passengers are treated to comfort bench seats with armrests, along with adjustable backrests and head restraints.

Thanks to a quick-release seat rail system the position of the bench seats is adjustable. The driver too has plenty of reasons to enjoy the ride: the comfort driver seat can be adjusted individually. The multifunction steering wheel with trip computer and the instrument cluster with high-quality display make it easy to call up information and control vehicle functions. The TEMPMATIC air conditioning system helps the driver to keep a cool head.

Enhancements to standard equipment for the Vito Tourer SELECT compared with the Vito Tourer PRO (selection):

Exterior

Bumpers front and rear painted in body colour

40.6 cm (16-inch) 10-spoke light-alloy wheels, 6.5 J x 16 ET 52 with size 205/65 R16 tyres

Interior

3-seater comfort bench seat in 1st and 2nd rows of passenger compartment with folding and removable outer seat

Headlamp Assist for automatic activation and deactivation of the headlamps

TEMPMATIC air conditioning

Instrument cluster with pixel-matrix display

Comfort driver's seat and comfort co-driver's seat

Light package with interior and ambient lighting

Multifunction steering wheel with trip computer

Rain sensor for automatic adjustment of the windscreen wiper frequency

Seat rail system in passenger compartment with quick-release attachment mechanism

Carpet (Dilour) in passenger compartment

Interior Chrome package: Chrome trim on dashboard and door panelling



TEMPMATIC automatically regulates the desired temperature for the driver and co-driver.



Inviting: the Vito Tourer SELECT with 40.6 cm (16-inch) light-alloy wheels plus bumpers and detachable body parts painted in body colour.



The comfortable and flexibly adjustable comfort seat benches in the first and second row seat up to six in the Vito Tourer SELECT.

Vito Tourer seating variants.



Vito Tourer compact, co-driver's bench seat, seating passenger compartment 3-seater bench in 1st row with folding outer seat, 3-seater bench in 2nd row.



Vito Tourer long, seating passenger compartment 2-seater bench in 1st row, 3-seater bench in 2nd row.



Vito Tourer long, seating passenger compartment 3-seater luxury bench in 1st row, folding outer seat, 3-seater luxury bench in 2nd row, folding outer seat.



Vito Tourer long, seating passenger compartment removed.



Vito Tourer long, co-driver's bench seat, seating passenger compartment 3-seater bench in 1st row with folding outer seat, 3-seater bench in 2nd row.



Vito Tourer extra-long, seating passenger compartment 2-seater bench in 1st row, 3-seater bench in 2nd row, guide rail system in passenger compartment with quick-release attachment mechanism.



Vito Tourer extra-long, seating passenger compartment 3-seater bench in 1st row with folding outer seat, 3-seater bench in 2nd row.



Vito Tourer extra-long, seating passenger compartment 2-seater bench in 1st row, 2-seater bench in 2nd row, 3-seater bench in 3rd row.

Many ways of moving forward.



Vito front-wheel drive system

Front-wheel, rear-wheel or all-wheel drive – the Vito is the only vehicle in the midsize van segment that comes with a choice of 3 drive variants.

Front-wheel drive is available for the entry-level engine variants¹ with 65 kW (88 hp) and 84 kW (114 hp). A further advantage of the vehicles with front-wheel drive is their low kerb weight. Depending on the vehicle's specification, this may mean an increase in payload² of as much as 120 kg compared with the previous model series. This drive variant also offers impressively good traction when the vehicle is unladen.

Rear-wheel drive is to be recommended when there is a need for more output and torque, for example when carrying heavy loads or towing a trailer. Particularly when coupled with the automatic transmission 7G-TRONIC PLUS³, this drive variant offers a high level of ride comfort.

¹ Detailed information about the consumption figures may be found in the section "Technical data". ² Valid for Vito 109 CDI and Vito 111 CDI with perm. GVW of 3100 kg. ³ The automatic transmission 7G-TRONIC PLUS is available as an option for the engine variants with 100 and 120 kW. It forms part of the standard specification for the engine variant with an output of 140 kW.

Poise and assurance. Wherever it roams. The Vito 4 x 4.

The Vito equipped with the 4 x 4 permanent all-wheel drive system¹ will make better progress where road conditions are poor. The excellent traction it gives enhances the vehicle's driving dynamics and improves handling. Torque is distributed to the front and rear axles respectively in a ratio of 45 to 55. On slippery, slick ground the wheels with insufficient traction can be braked with the help of the 4ETS Electronic Traction System. At the same time, drive torque is delivered to the wheels with good traction.

With its optimised traction control and excellent ride stability, the Vito 4 x 4 brings passengers, driver and cargo to their destination in safety and comfort over almost any terrain. But in all other respects, too, the Vito 4 x 4 is wonderfully adapted to its surroundings – for instance with a low loading edge to make loading and unloading easier.



Vito all-wheel drive system

¹ Only available in conj. w. automatic transmission 7G-TRONIC PLUS for engine variants with 100, 120 and 140 kW.

Good for the budget and for the environment.



The 4-cylinder OM651 diesel engine rated at 140 kW (190 hp) combines agile performance with a high level of environmental compatibility.

The two 4-cylinder diesel engines with common-rail direct injection and turbocharging form the basis for economical and sustainable use of the Vito Tourer. The 1598 cc engine is available in two output ratings and the 2143 cc engine in three. Depending on the engine variant, there is a choice among front-wheel, rear-wheel, and all-wheel drive systems. In conjunction with the optional BlueEFFICIENCY package, the 120 kW variant offers a potential consumption figure of 5.8 l/100 km¹.

Thanks to BlueTEC technology, all engines also comply with the Euro 6 emissions standard. With the aid of the AdBlue® additive, harmful nitrogen oxides in the exhaust gases are converted by means of selective catalytic reduction into water and nitrogen.

The engines for the Vito Tourer at a glance:

| |
|--|
| 65 kW (88 hp), 1598 cc, 230 Nm, 6-speed manual transmission, front-wheel drive |
| 84 kW (114 hp), 1598 cc, 270 Nm, 6-speed manual transmission, front-wheel drive |
| 100 kW (136 hp), 2143 cc, 330 Nm, 6-speed manual transmission, optionally 7G-TRONIC PLUS, rear-wheel drive |
| 120 kW (163 hp), 2143 cc, 380 Nm, 6-speed manual transmission, optionally 7G-TRONIC PLUS, rear-wheel drive |
| 140 kW (190 hp), 2143 cc, 440 Nm, 7G-TRONIC PLUS, rear-wheel drive |

➤ FIND OUT MORE

The full technical data for the Vito Tourer may be found from page 40 onwards.

¹ For the Vito Tourer 116 CDI with BlueEFFICIENCY package, 7G-TRONIC PLUS and registration as a passenger car (M1).

Paintwork and upholstery.

Standard paint finishes



arctic white



pebble grey



navy blue



jupiter red



granite green⁴

Metallic paint finishes¹



mountain crystal white metallic²



brilliant silver metallic



flint grey metallic



indium grey metallic



obsidian black metallic



dolomite brown metallic



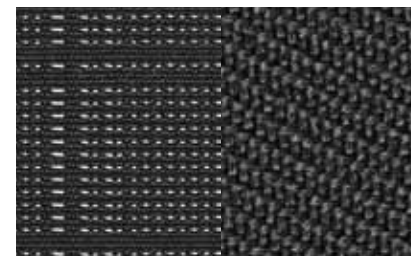
cavansite blue metallic

The standard and metallic paint finishes¹ shown here represent just a few of the possibilities available for your Vito Tourer. Other colours for special paint finishes (non-metallic paints) are optionally available. Custom paintwork, e.g. in your company colours, is also available on request.

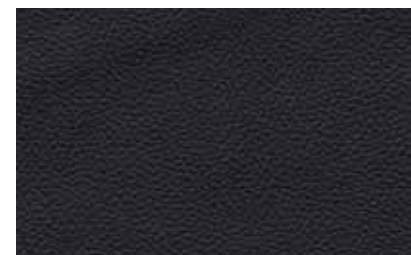
¹ Metallic paint finishes available as optional equipment. ² Not available for the Vito Tourer BASE without enhanced interior trim. ³ Seat cover available for Vito Tourer PRO & SELECT in conj. w. Bunk package.

⁴ Standard paint finish granite green will provisionally be available from December 2016.

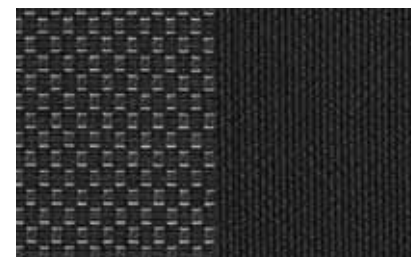
Upholstery



Black Tunja fabric



Man-made leather seat cover



Black Santiago fabric³

Standard and special equipment.

Safety.



- **COLLISION PREVENTION ASSIST¹** combines a distance and collision warning with Brake Assist BAS PRO.



- **Crosswind Assist** helps to prevent lateral displacement in gusty side winds.



- **ATTENTION ASSIST** can use a variety of parameters to detect signs of tiredness and alert the driver.



- **Lane Keeping Assist²** can help to avoid accidents caused by unintentional departure from your lane.



- **Blind Spot Assist²** can help to prevent accidents when changing lane, for example on motorways.



- The **LED Intelligent Light System** adjusts the headlamps to suit the light, road and weather conditions.



- The **reversing camera** shows a photorealistic image of your surroundings with dynamic guide lines and an indication of the direction of travel.



- The **airbags^{3,4}** for the driver and co-driver and the thorax/pelvis sidebags and windowbags in the front form part of the standard-fit safety equipment.

¹ Also part of the Driving Assistance package. ² Also part of the Lane Tracking and Driving Assistance package. ³ The thorax/pelvis sidebags and windowbags are optionally available for the Vito Tourer BASE. ⁴ The image shows simulated deployment of the airbag at maximum inflation, for the purpose of illustration only. ⁵ Standard for the Vito Tourer SELECT. ⁶ The Interior Chrome package is available as standard for the Vito Tourer SELECT. ⁷ Standard for the Vito Tourer 119 CDI. Detailed information about the consumption figures may be found in the section "Technical data".

● Standard equipment

○ Special equipment

Standard and special equipment.

Comfort.



- **Audio 10** offers many valuable information and communication functions: hands-free functionality and audio streaming via Bluetooth®, USB and Aux-in socket as well as an SD memory card slot.



- **Audio 15** features a high-resolution 14.7 cm (5.8-inch) TFT display and numerous connection options.



- The **Becker® MAP PILOT** transforms the Audio 15 radio into a high-quality, intuitively controlled navigation system with a 14.7 cm (5.8-inch) colour display.



- The **comfort seats⁵**, with their additional adjustment options, offer individual seat comfort in the front and in the passenger compartment.



- **THERMOTRONIC** automatically regulates the temperature, airflow and air distribution separately for the driver and co-driver.



- **Interior Chrome package.⁶** Chrome-plated trim on the air vents, the air conditioning thumbwheels and the insides of the doors further upgrades the interior.



- The **automatic transmission 7G-TRONIC PLUS⁷** offers outstandingly smooth gear changes and tremendous potential for saving fuel.



- The **panoramic sliding sunroof** allows light and air to flood into the interior, ensuring a bright, welcoming atmosphere.

Standard and special equipment.

Functionality.



- The **3-spoke multifunction steering wheel**¹ with trip computer offers a pleasant touch and feel and impressive ergonomics.



- The **43.2 cm (17-inch) 20-spoke light-alloy wheels** lend the vehicle a unique, dynamic design.



- The **Mirror package** includes automatically dimming mirrors and electrically folding exterior mirrors.



- **Active Parking Assist** makes it easier to find somewhere to park and to manoeuvre into or out of a parking space.



- **Cruise control** helps to maintain a set speed, making life easier for the driver.



- The **co-driver's bench seat** with adjustable headrests and three-point seat belts provides space for two passengers in the front.



- The **practical centre console**, with a stowage compartment for smaller items, is characteristic of the well-designed stowage concept.



- The **double cup holder** provides a place for drinks that is within easy reach of both the driver and the co-driver.

¹ Standard equipment for Vito Tourer SELECT. ² Not available for Vito Tourer BASE.



- The **electrically operated sliding door on the right** can be opened and closed at the touch of a button.



- The **chrome-plated radiator grille** enhances the look of the vehicle front end.



- The **electrically operated vent windows in the passenger compartment** provide additional ventilation.



- The **roof rails** allow bulky items to be transported on the vehicle roof and enhance the look of the vehicle.



- The **interior and ambient illumination¹** enhances comfort and includes among other things a reading light in the grab handle, as well as courtesy lights.



- The **Bunk package²** provides a comfortable place for sleeping – undisturbed by prying eyes.



- The **Table package²** offers various items designed to ensure an enjoyable journey in the passenger compartment.



- The **black tinted windows in the rear** provide protection from prying eyes and prevent the passenger compartment from overheating when the sun is shining.

Further standard and special equipment.

| Interior | BASE | PRO | SELECT |
|--|------|-----|--------|
| 3-passenger bench seat, 1 st row | ○ | ● | – |
| 3-passenger bench seat, 2 nd row | ○ | ● | – |
| 3-passenger bench seat, 1 st row, comfort | ○ | ○ | ● |
| 3-passenger bench seat, 2 nd row, comfort | ○ | ○ | ● |
| 3-passenger bench seat, 3 rd row, standard ¹ | ○ | ○ | ○ |
| Lockable glove compartment, illuminated | ● | ● | ● |
| Indicator lamps for oil and coolant levels, brake fluid, brake linings, bulb failure and door open | ● | ● | ● |
| 12 V sockets for rear seat rows, right and left | ○ | ○ | ○ |
| Driver's/front-passenger seat electrically adjustable | ○ | ○ | ○ |
| Guide rail system with quick-release attachment mechanism for 2 rows of seats | ○ | ○ | ● |
| Rear seat mounts with quick-release attachment system | ● | ● | – |
| Comfort overhead control panel | ○ | ○ | ● |
| Exit lamps | ○ | ○ | ● |
| Roof panelling and interior panelling in hardboard | ● | – | – |
| Roof panelling and interior panelling in superior quality | ○ | ● | ● |
| Wood flooring | ● | – | – |
| TPO floor | ○ | ● | ○ |
| Carpet | ○ | ○ | ● |
| Inverter, 12 V–230 V | ○ | ○ | ○ |
| Packages | | | |
| Driving Assistance package | ○ | ○ | ○ |
| Lane Tracking package | ○ | ○ | ○ |
| Parking package | ○ | ○ | ○ |
| Anti-Theft Protection package | ○ | ○ | ○ |
| Topload package | ○ | ○ | ○ |

| Exterior | BASE | PRO | SELECT |
|---|------|-----|--------|
| Trailer coupling, fixed/removable ball head | ○ | ○ | ○ |
| Electrically folding exterior mirrors | ○ | ○ | ○ |
| Exterior mirrors, heated and electrically adjustable | ○ | ● | ● |
| Electrics for trailer socket | ○ | ○ | ○ |
| Tailgate | ● | ● | ● |
| Hinged rear doors | ○ | ○ | ○ |
| Roof rail carrier bars | ○ | ○ | ○ |
| 40.6 cm (16-inch) 10-spoke light-alloy wheels | ○ | ○ | ● |
| 45.7 cm (18-inch) 10-twin-spoke light-alloy wheels | ○ | ○ | ○ |
| 48.3 cm (19-inch) 16-spoke light-alloy wheels | ○ | ○ | ○ |
| Sliding door, passenger compartment, left | ○ | ○ | ○ |
| Sliding door, passenger compartment, right | ● | ● | ● |
| Fully galvanised body | ● | ● | ● |
| Comfort | | | |
| Hill-Start Assist | ● | ● | ● |
| Seat heating for driver and co-driver | ○ | ○ | ○ |
| TEMPMATIC semi-automatic climate control | ○ | ○ | ● |
| Leather steering wheel and leather shift lever | ○ | ○ | ○ |
| Steering wheel adjustable for height and inclination | ○ | ● | ● |
| Remote-controlled central locking system | ● | ● | ● |
| Tinted glass all round | ○ | ● | ● |
| Load compartment organiser (with two shopping crates) | ○ | ○ | ○ |
| Window in tailgate/rear door with heated rear window and wipe/wash system | ● | ● | ● |
| Electric immobiliser | ● | ● | ● |
| Heating for windscreen washing systems | ○ | ○ | ○ |

| Engineering | BASE | PRO | SELECT |
|-------------------------------------|------|-----|--------|
| 6-speed manual transmission | ● | ● | ● |
| Permanent all-wheel drive | ○ | ○ | ○ |
| ASSYST service interval indicator | ● | ● | ● |
| Washer fluid level warning lamp | ● | ● | ● |
| Tank, large | ○ | ○ | ○ |
| Load uprating 3100 kg | ○ | ● | ● |
| Load uprating 3200 kg | ○ | ○ | ○ |
| BlueEFFICIENCY package ² | ○ | ○ | ○ |
| Diesel particulate filter | ● | ● | ● |

Safety/chassis

| | | | |
|---|---|---|---|
| Headlamp Assist | ○ | ○ | ● |
| Halogen fog lamps | ○ | ○ | ○ |
| Adaptive brake lights | ● | ● | ● |
| ADAPTIVE ESP® (Electronic Stability Program) in combination with ABS, ASR, EBD, BAS | ● | ● | ● |
| Seat belt warning for driver and co-driver | ● | ● | ● |
| Rain sensor | ○ | ○ | ● |
| PRE-SAFE® occupant protection system | ○ | ○ | ○ |

● Standard equipment ○ Special equipment

¹ Only for Vito Tourer extra-long.

² Standard equipment for Vito 119 CDI and with automatic transmission in conjunction with registration as a passenger car (M1).

Genuine Accessories.



Alustyle basic carrier bars for roof rails and New Alustyle ski and snowboard rack "Comfort". Designed for quick, flexible attachment to the roof rails. Up to a max. roof load of 150 kg. The (lockable) ski and snowboard rack is suitable for up to 6 pairs of skis or 4 snowboards. The practical pull-out function makes loading and unloading easier.



Velour floor mats. Elegant, high-quality tufted velour carpet with embroidered "Mercedes-Benz" lettering. Available in a range of colours to match your interior.



Rep mats. The perfect combination of extremely tough, durable needlefelt carpet and elegant looks. Can be clip-fastened to the floor of the vehicle to prevent slipping.



Rear-mounted bicycle rack on tailgate. High-value bicycle rack in anodised aluminium for simple, secure, mounting on tailgate. For up to 4 bicycles (or 2 E-Bikes). Maximum payload: 70 kg. Lockable.



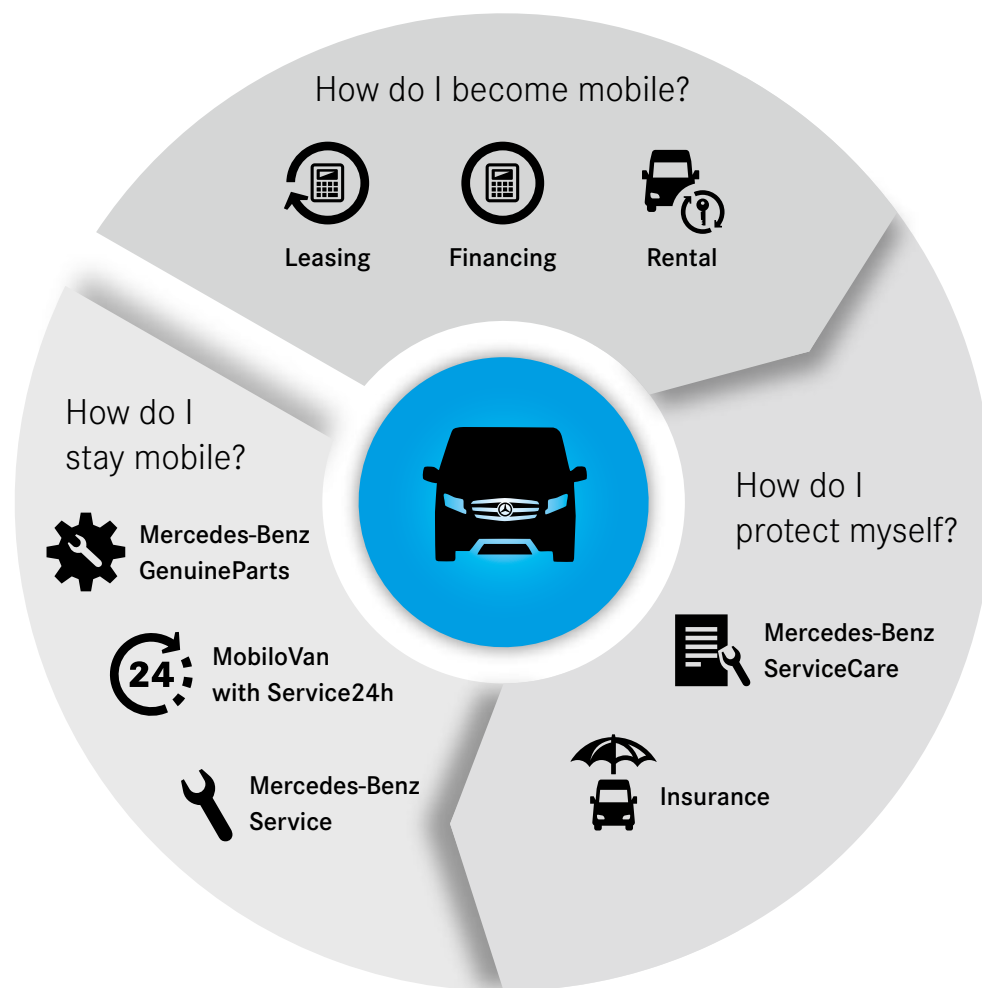
iPad® Rear Integration. This easy-to-use docking station integrates the iPad® with all its familiar functions into your Mercedes in an ergonomic, crash-proof manner. Available for the iPad® 2, iPad® 3 and iPad® 4.



Load compartment tub, shallow. The perfect way to keep the luggage compartment clean and prevent scratches. Made from lightweight, robust plastic.



One partner. All services. Mercedes-Benz.



Your company can only benefit from the economy and reliability of a Mercedes-Benz van. To enable you to enjoy these advantages during the entire time the vehicle is in use, we offer you comprehensive service and financial services in excellent Mercedes-Benz quality.

Choose from attractive leasing, financing or rental offers. Our fair insurance offers plus individually tailored services for maintenance and repair complete our range.

You would prefer a solution that covers everything? Then opt for one of our combined products. With these you receive comprehensive care with reliably calculable costs and can concentrate fully on the success of your business.

You can find out more about our offers directly from your authorised Mercedes-Benz dealer. They will be happy to give you comprehensive personal advice.

Just one of numerous possibilities:

Mercedes-Benz Service-Leasing



Leasing

+



Mercedes-Benz
ServiceCare



Mercedes-Benz
Service-Leasing

With one of our many all-in packages the costs can be reliably calculated over the entire contractual period. You can find the offer to suit your requirements at your authorised Mercedes-Benz dealer.

Mobility – for the vehicle's entire lifetime.



Financing

Mercedes-Benz Financial Services vehicle financing allows you to pay for your choice of vehicle in instalments which remain constant at attractive conditions.



Leasing

With leasing from Mercedes-Benz Financial Services you receive a new vehicle configured in accordance with your wishes and only pay for the use of the vehicle.



Mercedes-Benz Service-Leasing

One instalment, everything included: Mercedes-Benz Service-Leasing offers you a tailor-made all-in package combining the benefits of our leasing with our attractive Mercedes-Benz services.



Mercedes-Benz Rental

Mercedes-Benz Rental offers you fast and perfectly tailored mobility solutions, without tying up any capital. This means that you can cope with order peaks economically and flexibly.



Insurance

Our attractive insurance services with fair conditions give you security in the familiar Mercedes-Benz quality.



Mercedes-Benz ServiceCare

Comprehensive cover with individual Service packages: from maintenance and repair work through warranty extension to complete cover including wear repairs.



Mercedes-Benz MobiloVan with Service24h

With the standard mobility guarantee MobiloVan¹ you receive rapid help in Mercedes-Benz quality all over Europe – free of charge and for up to 30 years².



Mercedes-Benz GenuineParts

Mercedes-Benz GenuineParts are precisely tailored to the vehicle and stand for robust quality, extensively proven safety and high reliability.



Mercedes-Benz Service

With individually tailored services for maintenance and repair we ensure that your Mercedes remains reliable and retains its value.

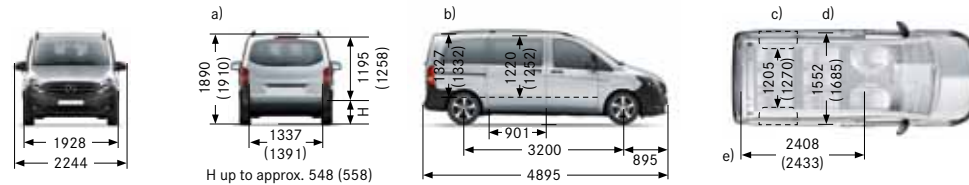
¹ MobiloVan applies to vehicles with initial registration from 01.10.2012. ² With regular maintenance at your authorised Mercedes-Benz dealer.

Technical data.

Key to dimensions:

All figures in mm. The dimensions shown are median values. They apply to standard-specification vehicles in unladen state. Figures in brackets relate to the Vito Tourer BASE. a) Optional roof rails increase vehicle height by 48 mm. b) Internal height. c) Distance between wheel arches. d) Maximum width of passenger compartment (measured at floor level). e) Dimension measured along vehicle floor.

Compact Vito Tourer with 3200 mm wheelbase

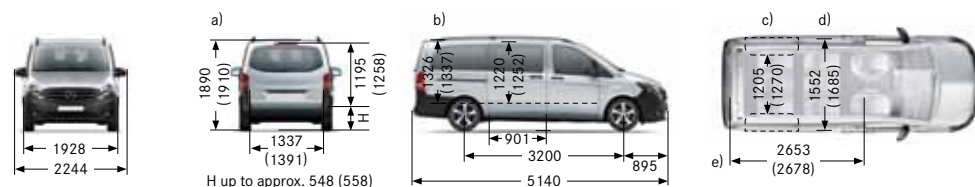


| Perm. GVW in kg | 3100 | 3200 |
|--|--|------------------------------------|
| 4 x 2 front-wheel drive | | |
| 65 kW (88 hp) at 3800 rpm 4 cylinders Diesel ¹ Euro 6 Gr. I 1598 cc 230 Nm at 1500–2000 rpm | 109 CDI | – |
| 84 kW (114 hp) at 3800 rpm 4 cylinders Diesel ¹ Euro 6 Gr. I 1598 cc 270 Nm at 1500–2500 rpm | 111 CDI | – |
| 4 x 2 rear-wheel drive | | |
| 100 kW (136 hp) at 3800 rpm 4 cylinders Diesel ¹ Euro 6 Gr. I 2143 cc 330 Nm at 1200–2400 rpm | 114 CDI | 114 CDI |
| 120 kW (163 hp) at 3800 rpm 4 cylinders Diesel ¹ Euro 6 Gr. I 2143 cc 380 Nm at 1400–2400 rpm | 116 CDI | 116 CDI |
| 140 kW (190 hp) at 3800 rpm 4 cylinders Diesel ¹ Euro 6 Gr. I 2143 cc 440 Nm at 1400–2400 rpm | 119 CDI | 119 CDI |
| All-wheel-drive 4 x 4 | | |
| 100 kW (136 hp) at 3800 rpm 4 cylinders Diesel ¹ Euro 6 Gr. I 2143 cc 330 Nm at 1200–2400 rpm | 114 CDI | 114 CDI |
| 120 kW (163 hp) at 3800 rpm 4 cylinders Diesel ¹ Euro 6 Gr. I 2143 cc 380 Nm at 1400–2400 rpm | 116 CDI | 116 CDI |
| 140 kW (190 hp) at 3800 rpm 4 cylinders Diesel ¹ Euro 6 Gr. I 2143 cc 440 Nm at 1400–2400 rpm | 119 CDI | 119 CDI |
| Kerb weight^{2, 3} in kg at perm. GVW | BASE: 1860–2025/PRO: 1865–2030/SELECT: 1900–2065 All-wheel-drive BASE: 2065–2075/PRO: 2070–2080/SELECT: 2105–2115 | |
| Payload³ in kg with perm. GVW | BASE: 1085–1240/PRO: 1080–1235/SELECT: 1045–1200 All-wheel-drive BASE: 1035–1125/PRO: 1030–1120/SELECT: 995–1085 | |
| Gross combination weight rating in kg | 4100/4800/5100/5600 ⁴ | 5200/5550 ⁴ |
| Maximum roof load in kg Towing capacity, braked⁵/unbraked in kg | 150 1000, 1800, 2000, 2500 ⁶ /750 | 150 2000, 2500 ⁶ /750 |
| Load capacity in m³ Maximum loading length in mm | 0.58 (0.72) 2408 (2433) | |
| Turning circle/track circle diameter in m with front-wheel rear-wheel all-wheel drive | 12.9/12.2 11.8/11.1 12.9/12.2 | |

Key to table: The figures for kerb weight and payload refer to the standard transmission.

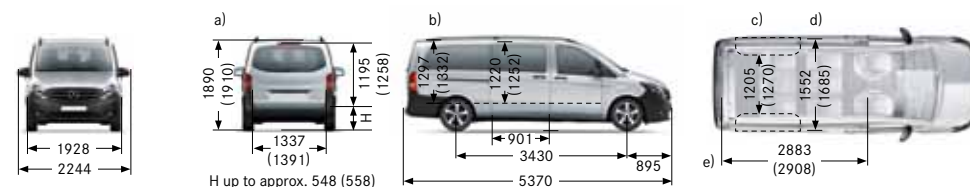
¹ Diesel particulate filter is standard equipment for all diesel engines. ² Figures according to Directive 92/21/EC in the version applicable at the time of going to print. (With driver 68 kg, luggage 7 kg, all service fluids, and tank 90% full.) ³ Equipment or equipment lines may affect payload capacity due to increase/

Long Vito Tourer with 3200 mm wheelbase



| 3100 | 3200 |
|--|------------------------------------|
| | |
| 109 CDI | - |
| 111 CDI | - |
| | |
| 114 CDI | 114 CDI |
| 116 CDI | 116 CDI |
| 119 CDI | 119 CDI |
| | |
| 114 CDI | 114 CDI |
| 116 CDI | 116 CDI |
| 119 CDI | 119 CDI |
| BASE: 1885-2050/ PRO: 1890-2055/ SELECT: 1925-2090 All-wheel-drive BASE: 2090-2100/ PRO: 2095-2105/ SELECT: 2130-2140 | |
| BASE: 1060-1215/ PRO: 1055-1210/ SELECT: 1020-1175 All-wheel-drive BASE: 1010-1100/ PRO: 1005-1095/ SELECT: 970-1060 | |
| 4100/4800/5100/5600 ⁴ | 5200/5550 ⁴ |
| 150 1000, 1800, 2000, 2500 ⁶ /750 | 150 2000, 2500 ⁶ /750 |
| 0.99 (1.22) 2653 (2678) | |
| 12.9/12.2 11.8/11.1 12.9/12.2 | |

Extra-long Vito Tourer with 3430 mm wheelbase



| 3100 | 3200 |
|--|------------------------------------|
| | |
| 109 CDI | - |
| 111 CDI | - |
| | |
| 114 CDI | 114 CDI |
| 116 CDI | 116 CDI |
| 119 CDI | 119 CDI |
| | |
| 114 CDI | 114 CDI |
| 116 CDI | 116 CDI |
| 119 CDI | 119 CDI |
| BASE: 1910-2075/ PRO: 1915-2080/ SELECT: 1950-2115 All-wheel-drive BASE: 2115-2125/ PRO: 2120-2130/ SELECT: 2155-2165 | |
| BASE: 1035-1190/ PRO: 1030-1185/ SELECT: 995-1150 All-wheel-drive BASE: 985-1075/ PRO: 980-1070/ SELECT: 945-1035 | |
| 4100/4800/5100/5600 ⁴ | 5200/5550 ⁴ |
| 150 1000, 1800, 2000, 2500 ⁶ /750 | 150 2000, 2500 ⁶ /750 |
| 1.39 (1.7) 2883 (2908) | |
| 13.7/13.0 12.5/11.8 13.7/13.0 | |

reduction in kerb weight. Further information is available from your Mercedes-Benz dealer. ⁴ Increased perm. gross combination weight in conjunction with reinforced trailer coupling available as an optional extra depending on type of drive system. ⁵ Depending on type of drive system. ⁶ Increased towing capacity in conjunction with reinforced trailer coupling available as an optional extra depending on type of drive system.

Fuel consumption and CO₂ emissions.

For vehicles complying with Euro 6 Gr. I emissions standard and with 4x2 front-wheel drive

without BlueEFFICIENCY package

| Engine | Transmission | Front axle ratio | CO ₂ emissions in g/km ¹ | Efficiency class | Fuel consumption in l/100 km ^{1, 2, 3} | | |
|---------|--------------|------------------|--|------------------|---|-------------|----------|
| | | | | | urban | extra-urban | combined |
| 109 CDI | M6 | 4.187 | 164 | B | 7.8 | 5.4 | 6.3 |
| 111 CDI | M6 | 4.187 | 164 | B | 7.8 | 5.4 | 6.3 |

For vehicles complying with Euro 6 Gr. I emissions standard and with 4x2 rear-wheel drive

without BlueEFFICIENCY package

| Engine | Transmission | Rear axle ratio ¹ | CO ₂ emissions in g/km ¹ | Efficiency class | Fuel consumption in l/100 km ^{1, 2, 3} | | |
|---------|--------------|------------------------------|--|------------------|---|-------------|----------|
| | | | | | urban | extra-urban | combined |
| 114 CDI | M6 | 3.467 | 174 | C-B | 8.5 | 5.4 | 6.6 |
| | A7 | 3.267 | - | - | - | - | - |
| 116 CDI | M6 | 3.267 | 163 | B | 7.8 | 5.2 | 6.2 |
| | A7 | 2.933 | - | - | - | - | - |
| 119 CDI | A7 | 2.933 | - | - | - | - | - |

with BlueEFFICIENCY package

| CO ₂ emissions in g/km ¹ | Efficiency class | Fuel consumption in l/100 km ^{1, 2, 3} | | |
|--|------------------|---|-------------|----------|
| | | urban | extra-urban | combined |
| 171-164 | B | 8.3-8.2 | 5.4-5.3 | 6.5-6.4 |
| 159-158 | B-A | 6.8-6.7 | 5.7-5.6 | 6.1-6.0 |
| 159-158 | B-A | 7.6-7.5 | 5.2-5.1 | 6.1-6.0 |
| 154-153 | A | 6.8-6.7 | 5.4-5.3 | 5.9-5.8 |
| 154-153 | A | 6.8-6.7 | 5.4-5.3 | 5.9-5.8 |

For vehicles complying with Euro 6 Gr. I emissions standard and with 4x4 all-wheel drive

| | | | | | | | | | | | | |
|---------|----|-------|---|---|---|---|---|---------|---|---------|---------|---------|
| 114 CDI | A7 | 2.933 | - | - | - | - | - | 174-171 | B | 7.5-7.4 | 6.0-5.9 | 6.6-6.5 |
| 116 CDI | A7 | 2.933 | - | - | - | - | - | 174-171 | B | 7.5-7.4 | 6.0-5.9 | 6.6-6.5 |
| 119 CDI | A7 | 2.933 | - | - | - | - | - | 174-171 | B | 7.5-7.4 | 6.0-5.9 | 6.6-6.5 |

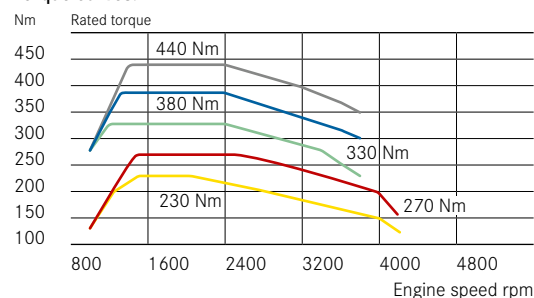
Key to table: M6 = 6-speed manual transmission ECO Gear; A7 = 7-speed automatic transmission 7G-TRONIC PLUS



The best for the engine:
Mercedes-Benz genuine engine oil

| | | |
|--|----------------------------|-----------------|
| | Diesel engine OM622 DE16LA | 65 kW (88 hp) |
| | Diesel engine OM622 DE16LA | 84 kW (114 hp) |
| | Diesel engine OM651 DE22LA | 100 kW (136 hp) |
| | Diesel engine OM651 DE22LA | 120 kW (163 hp) |
| | Diesel engine OM651 DE22LA | 140 kW (190 hp) |

Torque curves:



¹ The figures shown were obtained in accordance with the respective prescribed measuring process (Section 2, Nos. 5, 6, 6a of the German Ordinance on Fuel Consumption Labelling (Pkw-EnVKV)/Regulation (EC) no. 715/2007 in the currently applicable version in each case). Note: The figures do not apply to a specific vehicle and do not form part of the product offer; they are provided solely for the purpose of comparing different vehicle models CO₂ emissions resulting from the production and provision of the fuel or other energy sources are not taken into account in determining the CO₂ emissions pursuant to Directive 1999/94/EC. ² Tank capacity for all engines is approx. 57 l as standard, optionally approx. 70 l. AdBlue® tank capacity: 11.5 l, optionally approx. 25 l. ³ Actual consumption figures will depend on such factors as the weight of the vehicle and the selected equipment options.

Optional equipment and accessories (e.g. roof rails, bicycle carriers etc.) can modify relevant vehicle characteristics such as weight, rolling resistance and air resistance and, together with factors such as traffic and weather conditions, can influence fuel consumption and performance.



Put it to the test.

Every good working relationship begins with a trial period. A period for you to get to know the Vito Tourer more thoroughly and convince yourself of its strengths in every on-road situation. Drive a genuine Mercedes-Benz van and discover a vehicle whose tenacity, operational reliability and economic efficiency will benefit any enterprise – from the very first journey you make.

The dealer search function on the Mercedes-Benz website for your country, available via www.mercedes-benz.com, provides a simple way to find your nearest authorised Mercedes-Benz dealer. We hope you enjoy your test drive.

Further information about the Vito Tourer can be found in the online Owner's Manual, which can be found via the Mercedes-Benz website for your country.



www.mercedes-benz.com

Please note: changes may have been made to the product since this brochure went to press (19.09.2016). The manufacturer reserves the right to make changes to the design, form, colour or specification during the delivery period, provided these changes, while taking into account the interests of the vendor, can be deemed reasonable with respect to the purchaser. Where the vendor or the manufacturer uses symbols or numbers to describe an order or the subject of an order, no rights may be derived solely from these. The illustrations and descriptions may include accessories and items of optional equipment which are not part of standard specification. Colours may differ slightly from those shown in the brochure, owing to the limitations of the printing process. This brochure may also contain models and services which are not available in certain countries.

This brochure is distributed internationally. Information given regarding statutory regulations, legal requirements and taxation and the consequences thereof applies to the Federal Republic of Germany only and is correct at the time of going to press. Please consult your Mercedes-Benz van dealer for final details.
www.mercedes-benz.com

Storage of technical data in the vehicle: electronic vehicle components (e.g. airbag control unit, engine control unit, etc.) include data storage capacity for technical vehicle data such as messages in the event of technical malfunction, vehicle speed, braking force or functionality of restraint and driving assistance systems in the event of an accident (no

audio or video data are recorded). The data are stored fleetingly as a snapshot in time e.g. a very brief data record to report a malfunction (a few seconds at most), e.g. in the event of an accident or, in abbreviated form, for instance in order to assess component stress. The data saved can be retrieved via interfaces within the vehicle, then processed and used by trained technicians as a means of diagnosing and resolving any malfunction or by the manufacturer for analysis purposes and as a means of improving vehicle functions. At the customer's request, data may also be used as the basis for the provision of further optional services. The transmission of data from the vehicle to the manufacturer or a third party is only possible as permitted by law (e.g. emergency call from the vehicle) or on the basis of a contractual agreement with the customer, with due consideration to data protection legislation. Further information about data stored within the vehicle may be found in the owner's guide to the vehicle, available in printed form in the vehicle.

Take-back of end-of-life vehicles. You can return your Vito Tourer to us for environment-friendly disposal in accordance with the European Union (EU) End-Of-Life Vehicle Directive. But that day lies a long way off. A network of vehicle take-back depots and dismantlers has been established to make it as easy as possible for you to return your vehicle. You can leave it at any of these points free of charge and, by doing so, make an important contribution to completing the recycling process and conserving resources. For further information about the recycling and disposal of end-of-life vehicles, and the take-back conditions, please visit your national Mercedes-Benz website.