

GLE

Sport Utility Vehicle and Coupé



Mercedes-Benz



Breathe in freedom.

Dynamism. Assertiveness. The art of letting go. Those who possess these qualities radiate a special serenity, appreciate what they have achieved and enjoy every moment to the full. This is a sublime state. And sublimity comes in various forms. Discover the Mercedes-Benz GLE and the GLE Coupé. At home in every terrain.

AT HOME IN EVERY FORMAT.



Experience the two GLE models in glorious HD. With the Mercedes-Benz brochure app for the iPad® and with the Digital Owner's Manual from "Mercedes-Benz Guides" for the iPhone®, Both apps feature a host of films and additional content and are available free of charge from the iTunes Store®.

Unique in every terrain:

2 | Mercedes-Benz GLE 500 e 4MATIC **iridium silver metallic**

AMG 5-twin-spoke light-alloy wheels, nappa leather/leather upholstery in black pearl/black, light longitudinal-grain aluminium trim

8 | Mercedes-Benz GLE 250 d 4MATIC **designo diamond white bright**

5-twin-spoke light-alloy wheels, designo Exclusive nappa leather upholstery in espresso brown, brown open-pore ash wood trim

12 | Mercedes-AMG GLE 43 4MATIC **obsidian black metallic**

AMG 5-twin-spoke light-alloy wheels, leather upholstery in black, black piano lacquer trim

14 | Mercedes-AMG GLE 63 S 4MATIC **designo diamond white bright**

AMG cross-spoke light-alloy wheels, AMG Exclusive nappa leather upholstery in black with grey contrasting topstitching, AMG carbon-fibre/black piano lacquer trim

16 | Mercedes-AMG GLE 43 4MATIC Coupé **diamond silver metallic¹**

AMG 5-twin-spoke light-alloy wheels, nappa leather/leather upholstery in black pearl/black with red contrasting topstitching, light longitudinal-grain aluminium trim

22 | Mercedes-Benz GLE 350 d 4MATIC Coupé **designo hyacinth red metallic**

5-spoke light-alloy wheels, nappa leather/leather upholstery in porcelain/black, black piano lacquer trim

26 | Mercedes-AMG GLE 63 S 4MATIC Coupé **designo diamond white bright**

AMG cross-spoke light-alloy wheels, AMG Exclusive nappa leather upholstery in black with grey contrasting topstitching, AMG carbon-fibre/black piano lacquer trim

Pioneering in every terrain:

30 | Mercedes me

34 | Services

38 | Engines

39 | Plug-in hybrid

40 | GLE suspension and Off-Road Engineering package

42 | GLE Coupé suspension with AIRMATIC package

44 | Driving Assistance Plus package

45 | Integral safety concept

46 | Infotainment, networking and multimedia

48 | Seating comfort and spaciousness

50 | AMG models

52 | Mercedes-AMG performance vehicles

56 | Mercedes-AMG technology

57 | AMG Performance Studio

58 | Equipment, packages and accessories

72 | Wheels

76 | Technical data and dimensions

81 | Upholstery and paintwork

¹ Cover image shows car in designo hyacinth red metallic.

The illustrations may include accessories and optional extras which do not form part of the standard specification.



Exuding freedom.

The GLE embodies a unique view of the world. Its confident stature, refined lines with high beltline and powerfully emphasised wheel arches hold a special allure for all those who want to lead the way rather than just follow it. Inspired by those who venture down new avenues every day.





Swap wanderlust for
broader horizons.



PLUG-IN HYBRID

How can energy be used even more efficiently? With forward-looking energy management – or what we call Intelligent HYBRID. As well as taking account of the current driving status and the driver's requirements, this hybrid-drive operating strategy is based on the possible topography for the next eight kilometres, such as uphill or downhill gradients and bends. To make this possible, the system accesses the COMAND Online navigation data to control charging and discharging of the high-voltage battery. By way of example, it uses the battery's energy content to provide impetus prior to a downhill gradient so that the battery can then be recharged by recuperation when driving downhill.

Independence to go.

In a familiar position, above it all. With exquisite comfort and high-quality appointments and materials throughout, the GLE interior exudes spaciousness. And wherever you happen to be, Mercedes me connect keeps you linked up to an even wider world with innovative connectivity services that open up exciting opportunities for digital networking.





A free agent every minute of the way.

Be it loose gravel, rough asphalt or unsurfaced roads. You know the right way. With the permanent all-wheel drive system 4MATIC and perhaps the added option of the Off-Road Engineering package (not available for all models) you'll travel safely, whatever the terrain. The variable vehicle body level and the "Offroad+" transmission mode are just two of its greatest strengths. You benefit from the best possible traction at all times.



DYNAMIC SELECT

With DYNAMIC SELECT dynamic handling control, the GLE offers a choice of up to six transmission modes. In addition to "Individual", "Comfort", "Slippery" and "Sport" modes, the driver can also select "Offroad" mode for light off-road terrain using the DYNAMIC SELECT Controller in the centre console of the 4MATIC models (except in the GLE 500 e). If the GLE model is equipped with the optional Off-Road Engineering package, there is an "Offroad+" transmission mode available for use in heavy off-road terrain. All DYNAMIC SELECT modes are depicted on the central Media Display, including particularly impressive off-road animations: various parameters such as uphill gradient, roll angle, steering angle and compass course are displayed dynamically in real time.



The inside story.

Revel in an elegance that is reflected in every fine detail. From soft designo Exclusive nappa leather in espresso brown to the warm grain of the fine wood trim. A blend of aesthetic appeal, generous spaciousness and intelligence. Use the rear compartment as you wish thanks to variable seats. Quality and comfort – inextricably linked.



The upwardly mobile model.

Impressively different: the Mercedes-AMG GLE 43 4MATIC is your point of entry to the world of Driving Performance. Its tangibly enhanced agility and lateral dynamics add up to a compelling package. Motorsport thrills on a daily basis – in terms of looks as well as performance in the case of the GLE 43 4MATIC: the confident exterior and interior design immediately mark it out as a member of the unique AMG family.





Taking aspiration to
a higher level.



Energetic, expressive and ready for maximum performance. The Mercedes-AMG GLE 63 S 4MATIC – the fusion of premium SUV and motorsport technology. Hallmark features of the AMG S-Models include the characteristic AMG front apron with front splitter in silver chrome and A-wing in high-gloss black, while the 3-spoke AMG performance steering wheel and AMG sports seats make this exceptional vehicle a superbly conditioned athlete on the inside, too.



Every family has one member
who breaks the mould.

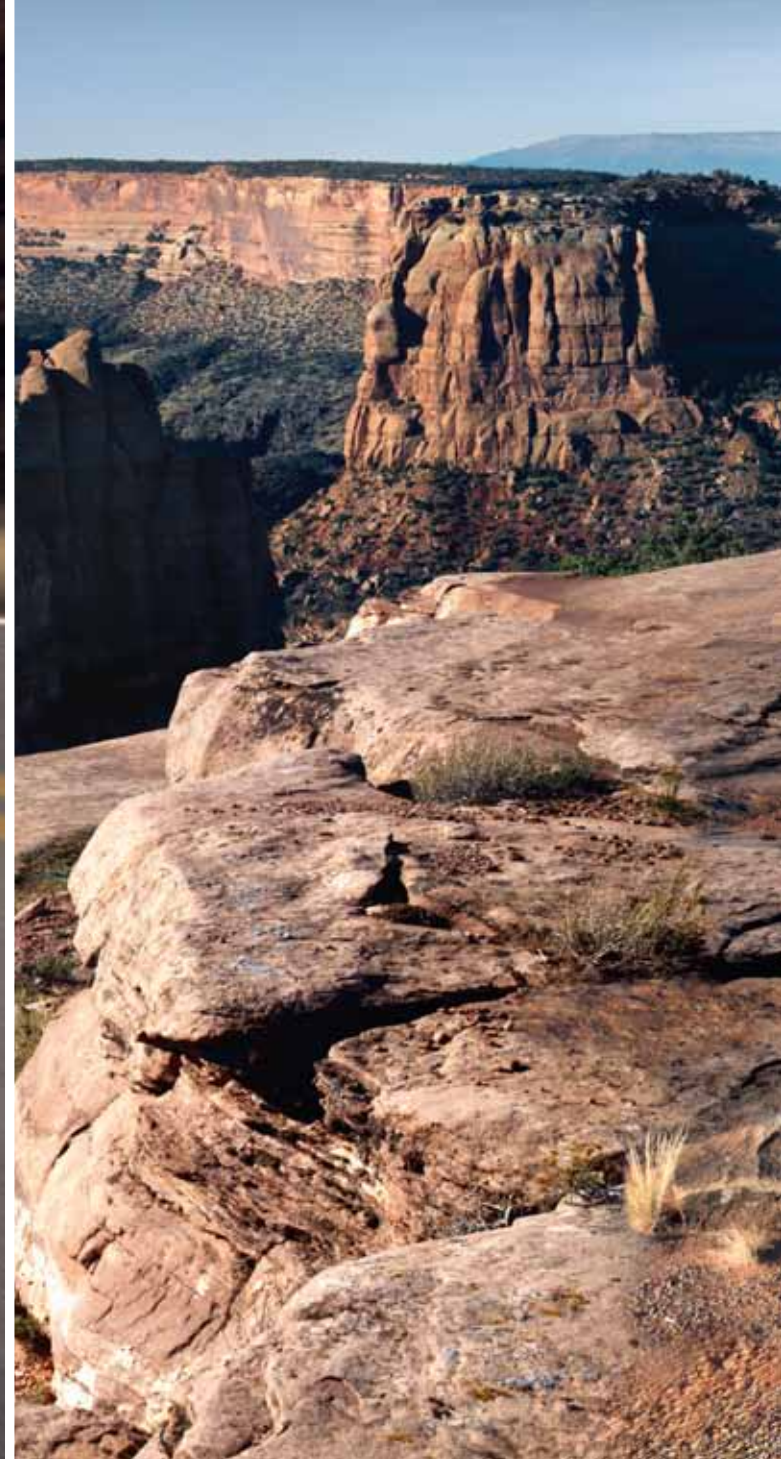


A new expressionism in the art of vehicle construction comes to life in the GLE Coupé. It combines the presence of an SUV with the dynamism and agility of a coupé. The GLE Coupé is 81 mm longer and 68 mm wider than the GLE. Such dimensions, in conjunction with a 65 mm reduction in height and the sloping coupé roof, make for sports car-like proportions. The extended side lines are a perfect symbol of its undreamt-of dynamism, planted on the road by light-alloy wheels measuring up to 55.9 cm (22 inches).



Non-conformist. But extremely accommodating.

The technology of the GLE Coupé more than lives up to the promise of its design. You can select from up to five transmission modes using the DYNAMIC SELECT Controller. The damping level is always selected automatically thanks to AIRMATIC air suspension and the Adaptive Damping System ADS PLUS (optional, depending on engine).





THE MERCEDES-AMG GLE 43 4MATIC COUPÉ

Even more power, even more adrenaline: cutting-edge drive technology, sportily configured brake and exhaust systems plus special, hallmark AMG suspension components propel the vehicle into the high-performance class. In “Sport+” transmission mode, included as standard, there are higher starting revs,

later shift points, tauter damping and additional lowering of the vehicle. What’s more, a sports lighting function enhances the active light function and speeds up the response of Highbeam Assist. The Mercedes-AMG GLE 43 4MATIC Coupé. The stuff of your wildest dreams.





The view from
the hot seat.

Indulge in some extra style and sophistication. The high seat position in the GLE Coupé ensures an elevated driving feel, while the horizontal lines of the interior create a markedly sporty atmosphere. Features that immediately catch the eye include the large trim parts finished in sporty and elegant aluminium as standard or in wood or exclusive carbon fibre as an option. As its crowning glory, the cockpit boasts a high-resolution Media Display with an elegant glass screen measuring up to 20.3 cm.



A design idiom that's
the talk of the town.



Radiating power.

The upright three-dimensionally sculpted sports grille is the defining feature at the front end of the GLE Coupé. Powerdomes accentuate the contours of the bonnet, perfectly framed by the exquisitely designed LED Intelligent Light System with its iconic “eyebrows” and a distinctive light design by day and by night.






A white Mercedes-AMG GLE 63 S 4MATIC Coupé is shown from a front-three-quarter view, driving on a dark, winding road in a desert landscape. The car's front grille, featuring the Mercedes-Benz star, and its headlights are prominent. The license plate reads 'S UV 2922'. The background consists of rugged, rocky hills under a dramatic, cloudy sky. The car is moving quickly, as indicated by the motion blur on the road and the dust kicked up behind it.

The Affalterbach manifesto. Mercedes-AMG GLE 63 S 4MATIC Coupé.

Motorsport technology catapults the GLE Coupé to the front of the starting grid. Breathtaking greetings from Affalterbach: the uncompromisingly sporty Mercedes-AMG GLE 63 4MATIC Coupé with V8 biturbo engine and the even more cutting-edge S-Model (pictured here) with 430 kW (585 hp) and peak torque of 760 Nm. A craving for cornering: AMG's hallmark performance-oriented, rear-biased 40 : 60 power distribution.

A high-angle, wide shot of the front interior of a Mercedes-AMG vehicle. The image captures the driver's side, showing the leather-upholstered front and rear seats with grey perforated sections and contrasting topstitching. The center console features a gear shifter and handbrake. The dashboard and door panels are finished with a combination of black piano lacquer and carbon-fibre trim. The steering wheel is partially visible, and the view through the windshield shows a dramatic, cloudy sky over a landscape.

You've never been pressed back into sportier seats. Enjoy the Mercedes-AMG high-performance driving experience from the best position: on AMG sports seats upholstered in black AMG Exclusive nappa leather with grey contrasting topstitching. Optional trim in AMG carbon-fibre/black piano lacquer gives the interior the ultimate high-end look.



A new take on Driving Performance.



Our world in your hands.

www.mercedes.me – it's all about you. Discover a world of fascinating services, products and innovations that will simplify and enrich your life. Coming straight to you in digital form. And turning our world into your world.





Life can be so fascinating when you're fully connected.

All our connectivity and mobility services plus a host of other fascinating features – all in one place and exclusively for you. That's Mercedes me. Register free of charge today and make the world of Mercedes-Benz your very own at your convenience – on your PC or laptop or in mobile mode via tablet, smartphone or smartwatch. And because your life is forever changing, our services are also continually evolving. Join us now at: **www.mercedes.me/welcome**

Looking for individual inspiration in real life, too? The Mercedes me Stores are a fascinating phenomenon worldwide – in Beijing, Moscow and Hamburg, for example.



Mercedes me connect connects you with your vehicle – and your vehicle with the whole world. A comprehensive range of convenient connectivity services relating to all areas of your vehicle supports you, ensuring greater safety, closer contact and an even more fascinating driving experience. It's reassuring to stay connected all the time while you're on the move. Mercedes me connect includes Standard Services, which are able to provide you with automatic support in the event of a breakdown or an accident, as well as Remote Online Services – the option enabling vehicle settings to be carried out by smartphone – and lots more.

Mercedes me inspire offers special brand experiences and an opportunity to engage in an inspiring dialogue. We aim to share our ideas with you, and we would like to know your ideas and wishes. So that we can always offer you the best solutions. A community is available to this end, and you will also find a growing range of offerings and experiences which go beyond the traditional vehicle-related topics – from areas such as events, travel and lifestyle.

Mercedes me move offers access to intelligent mobility solutions: car2go is the pioneer and global market leader in free-floating car sharing, the moovel mobility app pools the offerings from various mobility providers to find the ideal route from A to B. With the mytaxi app you can order a taxi, track its approach live and pay for your journey in a convenient manner. Mercedes-Benz Rent offers vehicles to suit all occasions for short- or long-term rental from an authorised Mercedes-Benz dealer near you. Blacklane enables you to book a chauffeur-driven limousine, FlixBus offers inexpensive, comfortable and environment-friendly trips on long-distance coaches.

Mercedes me assist makes easy work of organising maintenance for your vehicle, providing a convenient online means of locating a Mercedes-Benz dealer in your neighbourhood and arranging a service appointment. The digital service report keeps you up to date on performed service work at all times. The report is available to you online just one day after a service. In addition to the current service report, you can also view your vehicle's complete service history and service intervals, and you can print out this information whenever required.

Mercedes me finance offers you various routes to your vehicle of choice. Mercedes-Benz Bank/Mercedes-Benz Financial Services finds the ideal leasing, financing and insurance solution together with you – tailored to your needs. Our leasing products enable you to drive the latest models at all times while enjoying maximum flexibility, as you pay not for acquisition of the vehicle, but only for its use. You also benefit from attractive monthly instalments. Our financing arrangements let you pay for your new Mercedes-Benz in a way that suits your personal budget. You can tailor your monthly instalments to your needs by deciding on an appropriate down-payment and term for your contract. Our individual insurance solutions offer reliable protection for your budget and your vehicle on attractive terms. Once a contract is in place, you can conveniently manage your finance applications online.¹

¹ Depending on market availability.

Our service: the perfect fit for your Mercedes.

Beyond the car itself, you also acquire something priceless – an exclusive partnership with Mercedes-Benz. For you, this means safety, independence and motoring free of any worries. In other words: the reassuring feeling of driving a Mercedes.

The best for your Mercedes. Nobody knows your Mercedes better than our experienced specialists at the Mercedes-Benz workshops. The comprehensive range of services and the high standard of quality ensure that your vehicle is in top condition. We use proven Mercedes-Benz GenuineParts and special tools to this end.

The best for you. Motoring free of any worries right from the word go: with the tailor-made Mercedes-Benz Service Contracts. These offer you the benefits of a reliable basis for long-term planning, permanent control over costs, fixed monthly rates, cost transparency and ideal protection from additional workshop costs.

The best for your mobility. The Mercedes-Benz Mobilo¹ mobility solution provides for motoring free of any worries throughout Europe – covering breakdowns, accidents, minor mishaps and vandalism. The benefits offered by Mobilo include on-the-spot assistance, a replacement vehicle, towing and overnight hotel accommodation, for example. Mobilo comes free of charge for the first two years after initial registration and can subsequently be renewed each time the vehicle is serviced by an authorised service partner, for a period of up to 30 years in all. Whenever you need assistance, you can reach us free of charge throughout Europe on 00800 1 777 7777².

↳ FIND OUT MORE

For the full information on Mercedes-Benz Service Contracts, go to www.mercedes-benz.com/servicevertraege – or ask your authorised Mercedes-Benz dealer to draw up an individual offer for you.

¹ Our general terms and conditions apply. The period of validity is extended after each service carried out by an authorised Mercedes-Benz service partner until the due date for the next service – up to a maximum of 30 years after initial registration. ² Roaming charges may apply when calling from abroad.



What would motorsport be without Mercedes-Benz?

The first vehicle ever to win an automobile race was powered by a Daimler engine. The first Mercedes was a racing car. The Silver Arrows – a true legend. Mercedes-Benz has a long tradition of involvement with the world of sport. Motorsport shapes the brand and every vehicle bearing the Mercedes star to this day. Discover the brand's unique history first-hand: at the Mercedes-Benz Museum in Stuttgart.

↘ FIND OUT MORE

Discover just what has been moving the world for over 130 years and take a journey through time as well as through the history of the automobile at the Mercedes-Benz Museum. More than 1500 exhibits await you on 16,500 m² of floorspace, including unique gems such as the oldest surviving Mercedes from 1902 or the legendary gull-wing models. Welcome to a place of innovation:

www.mercedes-benz.com/museum

www.facebook.com/mercedesbenzmuseum

www.instagram.com/mercedesbenzmuseum

www.twitter.com/mb_museum

www.google.com/+mercedesbenzmuseum

www.youtube.com/mercedesbenzmuseum



What would Mercedes-Benz be without motorsport?

3 June 1934 marked the beginning of the Silver Arrows legend in the International Eifel Race at the Nürburgring. Today this legend is more alive than ever: in 2016 the Silver Arrows works team MERCEDES AMG PETRONAS won the Formula-1 constructors' and drivers' titles for the third year in a row, making history by winning 19 of the 21 Grand Prix races. In a spectacular finale in the desert city of Abu Dhabi, Nico Rosberg secured his first world championship title in his Mercedes-Benz F1 W07 Hybrid. The value of these successes extends way beyond the race track: every mile raced advances the development of lightweight materials and hybrid technology, among other things, for series production.

↘ FIND OUT MORE

Fascinating Formula 1 goes multimedia:

www.facebook.com/MercedesAMGF1

www.twitter.com/MercedesAMGF1

www.youtube.com/MercedesAMGF1

www.google.com/+MercedesAMGF1

www.instagram.com/MercedesAMGF1

www.MercedesAMGF1.com

www.mercedes-benz.com/motorsport



Mercedes-Benz F1 W07 Hybrid, 2016 season.



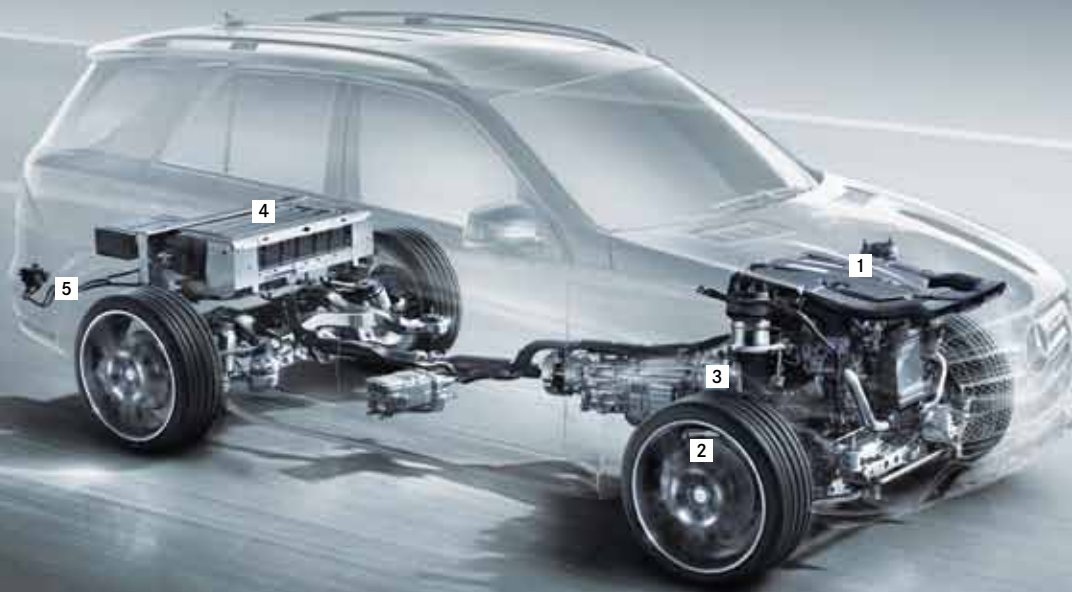
All charged up with our best ideas: the engines.

Our engineers extract far more than just horsepower from the three-litre displacement: while the V6 biturbo engine in the **GLE 400 4MATIC** and **GLE 400 4MATIC Coupé** generates 245 kW (333 hp), it impresses above all by delivering extremely high torque in practically any driving situation. The peak torque of 480 Nm is available between 1600 and 4000 rpm, allowing astonishingly low engine speeds. A technology package comprising power, refinement and efficiency that few can match – apart from the **Mercedes-AMG GLE 43 4MATIC** and the **Mercedes-AMG GLE 43 4MATIC Coupé**. The engine in this case delivers an additional 42 kW and 40 Nm.

THE ENGINE RANGE

| Diesel |
|--|
| GLE 250 d rated at 150 kW (204 hp) |
| GLE 250 d 4MATIC rated at 150 kW (204 hp) |
| GLE 350 d 4MATIC and GLE 350 d 4MATIC Coupé rated at 190 kW (258 hp) |
| Alternative drive system |
| GLE 500 e 4MATIC, petrol engine rated at 245 kW (333 hp), electric motor rated at 85 kW (116 hp), system output of 325 kW (442 hp) |

| Petrol |
|--|
| GLE 400 4MATIC and GLE 400 4MATIC Coupé rated at 245 kW (333 hp) |
| Mercedes-AMG GLE 43 4MATIC and Mercedes-AMG GLE 43 4MATIC Coupé rated at 287 kW (390 hp) |
| GLE 500 4MATIC and GLE 500 4MATIC Coupé rated at 335 kW (455 hp) |
| Mercedes-AMG GLE 63 4MATIC and Mercedes-AMG GLE 63 4MATIC Coupé rated at 410 kW (557 hp) |
| Mercedes-AMG GLE 63 S 4MATIC and Mercedes-AMG GLE 63 S 4MATIC Coupé rated at 430 kW (585 hp) |



GLE 500 e 4MATIC

The PLUG-IN HYBRID technology allows fast external charging from 20 to 100%¹ via a Wallbox in just two hours, or via a standard power socket in a good four hours.

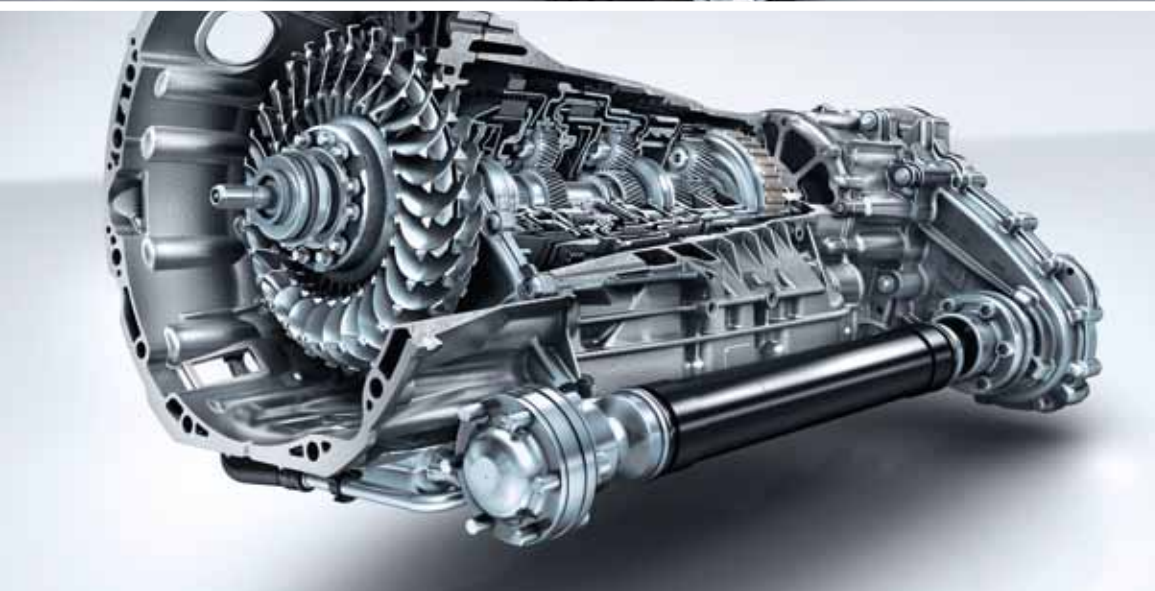
1 | 3.0-litre V6 petrol engine. **2** | Regenerative braking system. **3** | Electric motor. **4** | High-voltage lithium-ion battery. **5** | Charging socket.

¹ Charging time 20–100% varies between 2.0 and 4.1 hours (400 V/32 A–230 V/8 A), depending on power source.

The GLE 500 e 4MATIC. Electrifying power.

Enter a new era with pioneering **plug-in hybrid technology**. The GLE 500 e 4MATIC combines a powerful 3.0-litre V6 combustion engine and an electric motor with an externally chargeable high-voltage lithium-ion battery. The V6 engine produces 245 kW (333 hp), peak torque of 480 Nm and a top speed of 245 km/h. Together with the electric motor's 85 kW (116 hp) and 340 Nm, combined fuel consumption is 3.7–3.3 l/100 km. Thanks to Intelligent HYBRID – the anticipatory and exceptionally efficient operating strategy. Every

braking phase provides an energy boost, while the combustion engine is deactivated during overrun phases. Functions such as the four operating modes and the optional radar-assisted recuperation ensure an impressive energy footprint. On electric power alone, the vehicle has a range of up to 30 km and a top speed of 130 km/h – with zero local emissions.



Superlative performance as standard for the GLE.

Depending on the model, up to six **DYNAMIC SELECT** transmission modes can be selected using the Controller in the centre console. The “Comfort” transmission mode allows particularly well-balanced and efficient driving. In conjunction with the optional **AIRMATIC package**, “Sport” ensures more agile and dynamic tuning of the suspension, which is lowered by a further 15 mm, tauter damper tuning, a sporty steering characteristic and changed shift points. “Individual” lets the driver vary individual parameters precisely to their taste.

Outstanding traction on any surface comes courtesy of the permanent **all-wheel drive system 4MATIC¹** in combination with ABS, ESP® and the 4ETS Electronic Traction System. The wheels with insufficient grip are braked in a targeted manner and the drive torque transferred to the wheels with sufficient traction is increased.

Agility at a new level – the **9G-TRONIC** automatic transmission is the world’s first nine-speed automatic transmission with hydrodynamic torque converter in the premium segment. The wider ratio range allows a reduction in engine speed. Faster shift changes allow even more spontaneity and agility.

↘ FIND OUT MORE

Please see pages 76–79 for the full technical data and availability of the **7G-TRONIC PLUS** transmission variant.

¹ Not for the GLE 250 d.

Away from the road, in rough terrain, the optional **Off-Road Engineering package** for the GLE makes each trip uniquely enjoyable. This optional extra is available for the GLE 250 d 4MATIC, GLE 350 d 4MATIC, GLE 400 4MATIC and GLE 500 4MATIC. The **DYNAMIC SELECT** Controller can be used to optimise the handling characteristics for the particular terrain. With “Offroad” for sand and light terrain and “Offroad+” for heavy terrain. Depending on the mode, various characteristics such as those for ESP®, 4ETS, steering, ground clearance and air suspension are adjusted automatically. The highlight: the selected transmission mode is displayed in the instrument cluster and in the Media Display by means of an animation depicting gradient and incline angle, for example. The Off-Road Engineering package is only available in conjunction with the optional AIRMATIC package.



FURTHER FEATURES OF THE OFF-ROAD ENGINEERING PACKAGE

The low-range gearbox aids slow and careful driving in off-road terrain where a high level of tractive power is required and supports controlled downhill driving, particularly on low-traction surfaces.

The driver can adjust the gear ratio even more precisely to the requirements of driving in extreme off-road terrain by using the manual mode of the automatic transmission.

A 100% differential lock on the centre differential improves traction in difficult terrain even further.

An underguard for the engine, together with reinforced underfloor panelling the full length of the vehicle, helps to reduce damage caused, for example, by driving over obstacles.

The three additional selectable off-road ride heights allow the ground clearance to be increased by 30, 60 or 90 mm, corresponding to a maximum fording depth of 600 mm.





Emotional intelligence: GLE Coupé with AIRMATIC package and an extremely sporty setup.

The GLE feels like a true sports coupé the moment you start to drive it. Alongside the pioneering drive system configuration, the **AIRMATIC** air suspension tuned specifically for this model (model-dependent), together with the Adaptive Damping System ADS PLUS, ensures a high level of ride comfort and excellent driving dynamics. The damping system adjusts to the driving and road conditions at each wheel. Pitching and rolling can be reduced effectively when cornering or braking, for instance. The driver can choose a comfort-oriented or sportier configuration for the AIRMATIC air suspension. The self-levelling suspension ensures a constant ride height independently of the vehicle load and the driving conditions.

GLE COUPÉ STEERING AND SUSPENSION

The **Sports Direct-Steer system** adds to the comfort of speed-sensitive power steering with a variable ratio dependent on the steering angle. For tangibly more agile vehicle reactions and greater directional stability.

Takes bends as if it were on rails – thanks to its active suspension stabilisers, the optional **ACTIVE CURVE SYSTEM** reduces the rolling movements of the vehicle and thus ensures greater ride comfort on the road. When driving off-road, the higher degree of articulation facilitates greater traction.

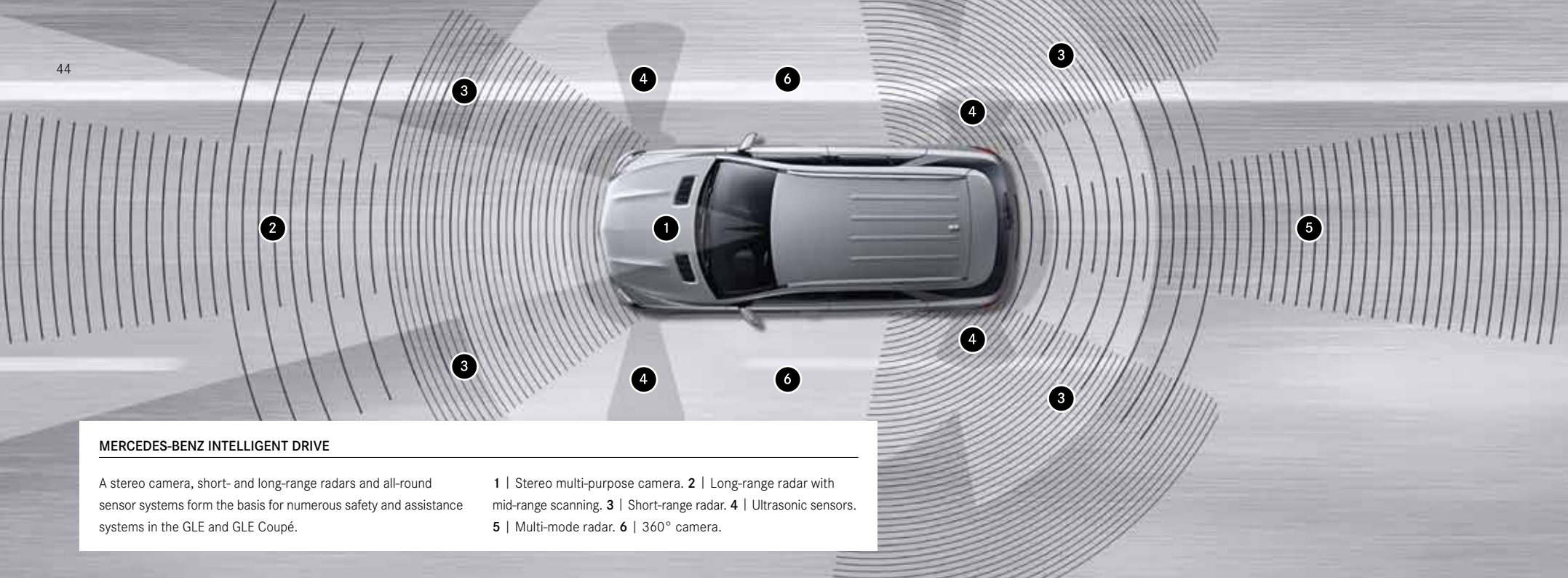


The GLE Coupé's suspension setup parameters change depending on the selected **DYNAMIC SELECT** mode. In "Sport+" mode (depending on model), the focus is on maximum lateral dynamics with the best possible ride comfort. This mode ensures extremely sporty shifting and damping characteristics. Lowering the vehicle by 25 mm reduces wind resistance and enhances stability. Even the active light function and main-beam headlamps are controlled more dynamically. The "Comfort" transmission mode allows balanced and efficient driving. The "Slippery" transmission mode provides optimised handling on icy and snow-covered roads. And "Individual" lets the driver vary the individual parameters precisely to taste.

GLE COUPÉ DYNAMIC SELECT COMPONENTS

For a driving feel as unique as your fingerprint: the DYNAMIC SELECT **Controller** is located in a perfect ergonomic position in the centre console.

The selected transmission mode is indicated on the instrument cluster and shown in animated form on the central **display**.



MERCEDES-BENZ INTELLIGENT DRIVE

A stereo camera, short- and long-range radars and all-round sensor systems form the basis for numerous safety and assistance systems in the GLE and GLE Coupé.

1 | Stereo multi-purpose camera. 2 | Long-range radar with mid-range scanning. 3 | Short-range radar. 4 | Ultrasonic sensors. 5 | Multi-mode radar. 6 | 360° camera.

Driving Assistance Plus package. Positively safer.

We develop intelligent assistance systems which actively support the driver and noticeably relieve the driver's workload. They monitor and analyse the vehicle's surroundings and driver behaviour – and warn the driver if they identify any critical situations. When necessary, some of the systems are able to intervene to take corrective action. This makes driving even safer and more relaxed. We call this area of technology **Mercedes-Benz Intelligent Drive**.

Intervening where necessary. Holding back where possible. This poise and assurance is inherent to the optional **Driving Assistance Plus package** for the GLE and the GLE Coupé.

Active Brake Assist with cross-traffic function is able to reduce the risk of accidents at junctions, rear-end collisions and pedestrian collisions, especially in urban traffic. **Active Lane Keeping Assist** and **Active Blind Spot Assist** provide support when the car unintentionally leaves its lane or if there is a risk of a collision with other vehicles when changing lanes. And finally, **PRE-SAFE® PLUS** extends the functions of the PRE-SAFE® anticipatory occupant protection system with measures when a rear-end collision threatens. The **Distance Pilot DISTRONIC** with **Steering Pilot** helps the driver to maintain a safe distance from vehicles travelling ahead and to keep the vehicle in the centre of the lane.

The reassuring feeling of driving a Mercedes-Benz.

We are the first automotive manufacturer worldwide to have developed an **integral safety concept**, aimed at avoiding accidents, ensuring ideal responses to dangers and lessening the consequences of accidents. For the occupants of a Mercedes and for all other road users, too.

SAFE DRIVING

The **drowsiness detection system ATTENTION ASSIST** serves to enhance driving safety, in particular on long trips and during night-time driving. It can monitor the steering behaviour of the driver to recognise typical signs of drowsiness and severe loss of attention, and give a visual and audible warning of impending microsleep.

In strong gusts of crosswind, **Crosswind Assist** can help the driver to stay on course. Thanks to the specific braking intervention, the vehicle is brought off-course considerably less.

The enhanced **Traffic Sign Assist** system (part of the optional COMAND Online system), including wrong-way warning function, can detect speed limits, no-entry signs and overtaking bans and the ends of such restrictions and display this information for the driver. If the vehicle enters a road against the sign-posted allowed direction of travel, a visual and acoustic warning will be emitted when the relevant sign is detected.

IN THE EVENT OF DANGER

Active Brake Assist gives the driver a visual warning if the distance from the vehicle ahead is too small. If a risk of collision is detected, an audible warning is given; the system can support the driver's braking action or brake autonomously if they fail to respond

The **PRE-SAFE®** anticipatory occupant protection system is able to identify critical driving situations in advance and to initiate precautionary measures to protect the vehicle's occupants if an accident appears imminent. Such measures include reversible belt tensioning or automatic closing of open side windows, for example.

IN AN ACCIDENT

In certain situations, the **active bonnet** (not installed in the Mercedes-AMG performance vehicles) is raised in the event of a frontal collision with a pedestrian or cyclist. The increased clearance between the bonnet and the components in the engine compartment creates additional deformation space to absorb an impact sooner and reduce the risk of injury. Numerous **airbags** can protect the occu-

pants in the event of an accident and reduce the risk of serious injury.

AFTER AN ACCIDENT

Every Mercedes-Benz is rigorously trained in first aid. If the worst comes to the worst, the engine can be stopped automatically and the central locking can be unlocked, plus the hazard warning lights and emergency interior lighting can be activated. Finally, the **Mercedes-Benz emergency call system** which is integrated as standard (country-specific) can transmit GPS position data and important vehicle information, although we very much hope this will never be necessary.

↘ FIND OUT MORE

The **Guidelines for Rescue Services** ensure that rescue services at the scene of the accident always have the latest vehicle data at their disposal. Full information is available via www.mercedes-benz.de/rettungsleitfaden



Touch and be touched. We hope you enjoy the show.

The world in your hands. You're fully connected with the intuitively operated touchpad with multitouch sensors (included with COMAND Online). It recognises simple gestures, your handwriting and even letters and numbers. Ideal for simple operation of the navigation, telephone, audio, video and internet functions, as well as many others, via the **COMAND Online** multimedia system, even while on the move. Information is shown in high-resolution and in colour on the large 20.3 cm Media Display.

MULTIMEDIA AND INFOTAINMENT

The optional high-end surround sound system developed in collaboration with **Bang & Olufsen**® (see figure) features 14 high-performance loudspeakers and boasts a total output of 1400 watts, turning the vehicle interior into a concert hall with perfect acoustics.

Carefully matched technical components, together with the Logic 7® technology from **Harman Kardon**®, provide an unmistakable and authentic surround sound. Passengers in all seats enjoy a thrilling 360-degree sound experience both with stereo and with 5.1 multi-channel recordings. Likewise optionally available.

The **Audio 20 CD** multimedia system features internet capability, radio, twin tuner and CD drive and allows networking with mobile devices via Bluetooth®. A Bluetooth®-enabled mobile phone with data option enables internet browsing when the vehicle is stationary.

User-friendly navigation, precise map data and excellent route guidance – the optional **Garmin® MAP PILOT** brings all the familiar benefits of a Garmin® navigation system to the Audio 20 CD. Simply by inserting an SD card with navigation software and map data records.

With smartphone integration (included with COMAND Online or available as an option in conjunction with Audio 20 CD or Audio 20 CD including pre-installation for Garmin® MAP PILOT), iPhones® can be integrated into the vehicle via **Apple CarPlay™** and Android smartphones by means of **Android Auto**. Certain functions can be operated via the vehicle's controls or by voice control.



In a new dimension.

Thanks to its elevated seat position, the **GLE** offers a truly high level of comfort the moment you get in. Electrically adjustable comfort seats for the driver and front passenger deliver optimum support and outstanding comfort on long journeys. The seats are upholstered in ARTICO man-made leather/fabric as standard or, optionally, in ARTICO man-made leather, leather or nappa leather. The GLE features an impressive load compartment with a capacity of up to 2100 litres. The rear seat backrests fold down with a 60:40 split, while the seat cushions can be folded up to create a flat load compartment floor. And the optional **EASY-PACK Fixkit** load compartment management system allows even more variable use of the load compartment.

GLE SEATING COMFORT AND SPACE MANAGEMENT

The optional **Memory package** allows you to store up to three different positions for the electrically adjustable front seats, steering column and exterior mirrors.

Optional **multicontour seats** with massage function provide outstanding seating comfort. The driver and front passenger can adjust their seats individually to their own particular build.

The active ventilation function of the optional **climatised seats** rapidly cools the seat surfaces to an acceptable temperature on hot days.

The optional **panoramic sliding sunroof** ensures an exceptionally light and appealing interior ambience.

The **EASY-PACK tailgate** can be opened and closed at the push of a button, allowing easy loading and unloading of the load compartment. With selection of the **KEYLESS-GO starting function**, the tailgate can be operated touch-free using the key.

The optional **EASY-PACK load compartment cover** protects the luggage from the sun and prying eyes. Likewise optionally available: a **lockable load compartment floor** in which you can safely stow valuable items.

The optional **through-loading feature** above the rear armrest is a practical feature that allows the transport of long items.





Giving you support. And freedom.

Standard equipment for the **GLE Coupé** includes electrically adjustable **sports seats** for the driver and front passenger – with perforated seat surfaces and upholstery in ARTICO man-made leather. These offer an optimum combination of comfort on long journeys and sporty support. Seat upholstery is also available in a wide range of material, colour and function options on request, one example being exceptionally fine nappa leather/leather in black pearl with red contrasting topstitching, as illustrated. The optional **panoramic sliding sunroof** ensures an exceptionally light and friendly interior ambience. When the vehicle is stationary the panoramic sliding sunroof can be operated from the outside in conjunction with the optional **KEYLESS-GO** electronic drive authorisation system.

GLE COUPÉ SEATING COMFORT AND SPACE MANAGEMENT

The optional **Memory package** allows you to store up to three different positions for the electrically adjustable front seats, steering column and exterior mirrors.

Further optional extras include **multicontour seats** for the driver and front passenger, including massage function, luxury head restraints and seat cushion depth adjustment.

Since the optional comfort seats for the driver and front passenger are **climatised**, they can be cooled down to an acceptable temperature on hot days.

The **EASY-PACK tailgate** can be opened and closed at the touch of a button for more convenient loading and unloading of the load compartment. With selection of the **KEYLESS-GO starting function**, the tailgate can be operated touch-free using the key.

Long items can be transported courtesy of the standard-fit folding seat backrests and the optional **through-loading feature** above the rear armrest.

Interior air quality can be greatly enhanced thanks to optional **ionisation**. The filter system with fine-particle activated charcoal filters greatly reduces harmful substances and odours.



Impressive start with Mercedes-AMG.

Superbly conditioned throughout: the **Mercedes-AMG GLE 43 4MATIC** and the **Mercedes-AMG GLE 43 4MATIC Coupé**. It is immediately obvious that both models are members of the unique AMG family. Their exterior is characterised by the powerful design of the AMG bodystyling. Their strong heart, a Mercedes-Benz 3.0-litre V6 biturbo engine in each case, impresses with a hefty 287 kW (390 hp) of power and an outstanding 520 Nm of torque.



EXTERIOR HIGHLIGHTS

AMG bodystyling with specific front and rear apron

Radiator fin edging in high-gloss black

Exterior mirror housings, beltline trim strips and window weatherstrips in black

AMG spoiler lip, painted in the body colour (not for Mercedes-AMG GLE 43 4MATIC)

Two chrome-plated AMG tailpipe trims with centrepiece

AMG light-alloy wheels painted black with a high-sheen finish: 5-spoke design with 265/45 R 20 tyres (Mercedes-AMG GLE 43 4MATIC) or 5-twin-spoke design with 275/45 R 21 tyres at the front and 315/40 R 21 tyres at the rear (Mercedes-AMG GLE 43 4MATIC Coupé)

Perforated brake discs at the front, brake callipers with painted brake calliper covers and “Mercedes-Benz” lettering

INTERIOR HIGHLIGHTS

3-spoke multifunction sports steering wheel with flattened bottom section in black nappa leather

Upholstery in ARTICO man-made leather/fabric (only for Mercedes-AMG GLE 43 4MATIC)

Upholstery in ARTICO man-made leather with AMG Line layout (only for Mercedes-AMG GLE 43 4MATIC Coupé)

Brushed stainless-steel sports pedals with rubber studs

AMG floor mats with “AMG” lettering

AMG instrument cluster with dials in chequered-flag look



A passion for performance. Mercedes-AMG.

An impressive demonstration of the AMG philosophy through and through: the **Mercedes-AMG GLE 63 4MATIC** and the **Mercedes-AMG GLE 63 4MATIC Coupé**. Under the bonnet: the AMG 5.5-litre V8 biturbo engine with 410 kW (557 hp). Road-hugging stance: with AMG Performance 4MATIC including AIRMATIC with ADS PLUS and ACTIVE CURVE SYSTEM. In the interior too, each element enhances the performance of the Mercedes-AMG models. Designed for minimum distraction and maximum excitement.

EXTERIOR HIGHLIGHTS

AMG-specific front apron (A-wing painted in body colour)

AMG radiator grille with twin louvre in matt silver chrome and “AMG” lettering

“V8 BITURBO” lettering on front wings

AMG rear apron with trim strip in black

AMG rear apron with diffuser fins

AMG spoiler lip in body colour¹

AMG light-alloy wheels in multi-spoke design on the GLE or in 10-spoke design on the GLE Coupé, painted titanium grey and featuring a high-sheen finish

AMG high-performance braking system, brake callipers painted in silver colour, with “AMG” lettering

AMG sports exhaust system with two chrome-plated twin tailpipe trim elements

INTERIOR HIGHLIGHTS

AMG performance steering wheel in black nappa leather, in a 3-spoke design, flattened bottom section, with silver-coloured aluminium shift paddles

AMG instrument cluster with 11.4 cm multifunction display and AMG main menu including RACETIMER and AMG start-up display

AMG sports seats with AMG-specific seat upholstery layout, optimised lateral support and “AMG” badge in the backrests

AMG nappa leather upholstery in the appointments colours black, espresso brown/black and porcelain/black

AMG door sill panels in brushed stainless steel with “AMG” lettering

Brushed stainless-steel sports pedals with rubber studs

AMG floor mats with embroidered “AMG” lettering

¹ Not for Mercedes-AMG GLE 63 4MATIC.





The epitome of excellence. The Mercedes-AMG S-Models.

An even more powerful take on Driving Performance: the **Mercedes-AMG GLE 63 S 4MATIC** and the **Mercedes-AMG GLE 63 S 4MATIC Coupé** question the status quo and address a desire for the seemingly unachievable: sportiness, aesthetics and luxury at the highest level. The output of the AMG 5.5-litre V8 biturbo engine has been uprated to 430 kW (585 hp).

EXTERIOR HIGHLIGHTS

Specific S-Model AMG front apron with A-wing in high-gloss black, A-wing trim strip in silver chrome

AMG radiator grille with twin louvre in matt silver chrome and “AMG” lettering
“V8 BITURBO” lettering on front wings

Specific S-Model AMG rear apron with trim strip and diffuser fins in silver chrome
AMG spoiler lip in body colour¹

AMG cross-spoke light-alloy wheels, painted titanium grey with a high-sheen finish

AMG high-performance braking system, brake callipers painted red, with “AMG” lettering

AMG sports exhaust system with two chrome-plated twin tailpipe trim elements

INTERIOR HIGHLIGHTS

AMG performance steering wheel in black nappa leather/DINAMICA microfibre

AMG instrument cluster with 11.4 cm multifunction display and AMG main menu including RACETIMER and AMG start-up display, scales with red applications

AMG sports seats with AMG-specific seat upholstery layout, optimised lateral support and “AMG” badge in the backrests

Exclusive AMG nappa leather upholstery in the appointments colours black, espresso brown/black and porcelain/black

“AMG” emblem on the front-seat head restraints, embossed (not in conjunction with multicontour seats)

Seat belts in grey (in conjunction with black interior appointments)

AMG door sill panels in brushed stainless steel with “AMG” lettering

Brushed stainless-steel sports pedals with rubber studs

AMG floor mats with embroidered “AMG” lettering



¹ Not for Mercedes-AMG GLE 63 S 4MATIC.

Mercedes-AMG technology.

You want top performance on tap at all times – the **AMG 5.5-litre V8 biturbo engine** will not disappoint. It has an output of 410 kW (557 hp) and 700 Nm of torque. Even at low engine speeds, it delivers its impressive pulling power. The S-Model takes it to the limit with an output of 430 kW (585 hp) and 760 Nm of torque. Such high-end performance requires lightning-fast conversion of power into forward thrust. The **AMG SPEEDSHIFT PLUS 7G-TRONIC** 7-speed automatic transmission allows an extremely sporty driving style with exceptionally short shift times – depending on the selected **DYNAMIC SELECT** transmission mode. Keeping all this dynamism assuredly on track is the AMG sports suspension with **ACTIVE CURVE SYSTEM**. Its active suspension stabilisers reduce vehicle roll. For enhanced driving stability at high speed on the motorway, for example.

HIGHLIGHTS AT A GLANCE

AMG Performance 4MATIC all-wheel drive with AMG-specific rear-biased 40:60 power distribution

AMG speed-sensitive sports steering with AMG-specific parameterisation and steering characteristics

DYNAMIC SELECT with five transmission modes

AMG high-performance braking system with large, internally ventilated and perforated brake discs for excellent deceleration performance and precision brake control





AMG Performance Studio.

For all those who can't get enough AMG fascination: the **AMG Performance Studio** is a training camp at which the Mercedes-AMG performance vehicles can be taken to new levels of top performance. Ready for more? The **AMG Driver's package** includes an increase in top speed to 280 km/h and a voucher for participation in driver training at the AMG Driving Academy.

HIGH PERFORMANCE IN DETAIL

AMG Performance steering wheel in black nappa leather/DINAMICA microfibre, grip area in DINAMICA microfibre, flattened bottom section, with 12-o'clock marking and aluminium shift paddles

AMG carbon-fibre engine cover with high-quality, genuine carbon fibre to visually emphasise the engine's level of performance and exclusivity

AMG performance exhaust system changes the sound depending on engine speed – emotionally sporty or understated

AMG cross-spoke light-alloy wheels, painted titanium grey with a high-sheen finish, with 285/40 R 22 front tyres and 325/35 R 22 rear tyres¹

AMG cross-spoke light-alloy wheels, painted black with a high-sheen finish, with 285/40 R 22 front tyres and 325/35 R 22 rear tyres¹

Vehicle pick-up from the AMG Customer Centre in Affalterbach, including personal tour, hospitality in the AMG Private Lounge, in-depth familiarisation with vehicle and full fuel tank (only applies in Germany)

¹ Not available for GLE.



Designed to thrill as standard: the GLE.

The best as standard. The GLE is a thrilling prospect from any angle. With an extensive range of standard equipment, of course. Such as halogen headlamps including integral LED daytime running lights, comfort front seats upholstered in ARTICO man-made leather/fabric and THERMATIC automatic climate control.

GLE EXTERIOR HIGHLIGHTS

Halogen headlamps with integral LED daytime running lamps

LED tail lights

Aluminium-look roof rails

Beltline trim strip and trim strip on side skirts in chrome look

Twin-pipe exhaust system with two integral chrome-plated tailpipe trims (non-functional in case of diesel engines)

GLE INTERIOR HIGHLIGHTS

Comfort front seats upholstered in ARTICO man-made leather/fabric

Electrically-adjustable front seats

3-spoke multifunction steering wheel, in nappa leather, with steering-wheel gearshift paddles and twelve function buttons

THERMATIC automatic climate control

Light longitudinal-grain aluminium trim

Audio 20 CD multimedia system

Photo shows optional 5-twin-spoke light-alloy wheels, Code 65R.



And the GLE Coupé.

An extraordinary driving experience – standard for the GLE Coupé. Standard-equipment highlights include the LED Intelligent Light System and the sports seats. Intelligent technology, intelligently integrated: the reversing camera with wide-angle lens is installed in the tailgate – below the Mercedes star.

GLE COUPÉ EXTERIOR HIGHLIGHTS

LED Intelligent Light System/LED daytime running lamps

LED tail lights

10-spoke light-alloy wheels, painted vanadium silver, with 275/50 R 20 tyres, (standard for GLE 350 d 4MATIC Coupé, GLE 400 4MATIC Coupé and GLE 500 4MATIC Coupé)

EASY-PACK tailgate with electric opening/closing

Chrome-finish front and rear underride guards

GLE COUPÉ INTERIOR HIGHLIGHTS

Sports seats for driver and front passenger upholstered in ARTICO man-made leather

Multifunction steering wheel in leather with twelve multifunction buttons

DYNAMIC SELECT with four or five transmission modes

THERMATIC automatic climate control

Reversing camera with dynamic guide lines in display

Audio 20 CD multimedia system





EXCLUSIVE interior. Style-defining.

Design yourself an interior that delivers an exciting new take on luxury: in a modern guise. Optionally with exclusive seat upholstery layouts, tasteful colour combinations and large wood trim parts. Hand-built character bathed in an exceptionally fine light thanks to the ambient lighting.

COMPONENTS AT A GLANCE

Attractive colour concepts: black, ginger beige/espresso brown¹, saddle brown/black, crystal grey/black and ginger beige/black

Comfort seats in fine leather with exclusive seat upholstery layout

Dashboard and beltlines in ARTICO man-made leather – roof liner in black, crystal grey or porcelain fabric

Ambient lighting with multi-coloured fibre-optic cables beneath the trim in the cockpit and also on the driver's door, front passenger's door and rear doors

Trim in high-gloss black poplar wood, high-gloss brown burr walnut¹, high-gloss brown eucalyptus wood, brown open-pore ash wood or black piano lacquer – incl. retractable wooden cover over the cup holder in each case

Interior Light package: illuminated front door sill panels, rear footwell lights, illuminated double cup holder, rear warning and exit lighting, illuminated air vent thumbwheels

Velour floor mats

¹ Not available for GLE Coupé.





designo Exclusive package. Uniquely personal.

Exclusivity and individuality taken to the limit: designo is the name of our world for the truly special. Enjoy exquisite refinement on seats upholstered in the finest designo nappa leather in porcelain/black or espresso brown. With exclusive designo diamond quilting pattern that also spans the door centre panels. A distinguishing mark of the finest craftsmanship and material quality: the “designo” badge in the front and rear seat backrests. The interior is completed by the designo roof liner in black or porcelain DINAMICA microfibre, depending on upholstery. The optional designo wood/leather steering wheel combines high-quality leather in the grip area with fine wood inlays in black piano lacquer.

Prepare to be enchanted. Your authorised Mercedes-Benz dealer will be happy to advise you with original samples.



↳ DESIGNO IN ALL ITS GLORY

Discover also the designo diamond white bright and designo hyacinth red metallic paint finishes on page 83. Configure your own appointments at www.mercedes-benz.com or with your nearest authorised Mercedes-Benz dealer.

HIGHLIGHTS AT A GLANCE

Seats (comfort seats in front) with unique design in diamond look and “designo” badges in the backrests

designo nappa leather seat upholstery in porcelain/black

designo nappa leather seat upholstery in espresso brown¹

Fully electrically adjustable, heated front seats and driver’s seat with 4-way lumbar support

designo wood/leather steering wheel with high-quality leather in the grip area and fine wood inlays in black piano lacquer (option)¹

Dashboard in designo nappa leather

Door panelling in designo nappa leather (beltlines, door centre panels and armrests)

designo roof liner in black or porcelain DINAMICA microfibre, depending on upholstery¹

designo black floor mats with edging in designo leather and “designo” badges

Automatic front passenger airbag deactivation



¹ Not available for GLE Coupé.



AMG Line Exterior and Interior. Dynamising.

The optional AMG Line Exterior lends the GLE and GLE Coupé an exceptionally dynamic aura even when stationary – thanks largely to the powerful AMG Line front and rear apron and the large AMG light-alloy wheels. The optional AMG Line Interior reflects and further emphasises this sportiness.

AMG LINE EXTERIOR HIGHLIGHTS

AMG bodystyling, comprising AMG-specific front and rear apron and also side sill panels painted in the body colour¹

Sports braking system¹ with perforated front brake discs and brake calliper trim with “Mercedes-Benz” lettering at the front

AMG 5-spoke light-alloy wheels, painted titanium grey with a high-sheen finish, with 265/45 R 20 tyres¹

AMG 5-twin-spoke light-alloy wheels, painted titanium grey with a high-sheen finish, with 275/45 R 21 front tyres and 315/40 R 21 rear tyres²

AMG LINE INTERIOR HIGHLIGHTS

Sports seats in ARTICO man-made ARTICO¹, optional upholstery in nappa³

3-spoke multifunction sports steering wheel in black nappa leather with flattened bottom section

Instrument cluster with distinctive dials in chequered-flag look

Brushed stainless-steel sports pedals with rubber studs

AMG floor mats with “AMG” lettering

¹ Not available for GLE Coupé. ² Not available for GLE. ³ Standard for GLE Coupé.







Say it in black. The Night package.

Sporty and expressive. Based on the AMG Line Exterior, the optional Night package provides distinctive highlights with high-gloss black elements – from the louvre in the radiator trim to the exterior mirrors and the AMG light-alloy wheels.



FEATURES AT A GLANCE

Louvre in the radiator grille in high-gloss black¹

AMG light-alloy wheels painted black with a high-sheen finish

Simulated underguard at the front and rear in high-gloss black

Exterior mirrors in high-gloss black

Roof rails², beltline trim strip and window weatherstrips in black

Heat-insulating dark-tinted glass starting from the B-pillar

Tailpipe trim in chrome¹

¹ Not available for AMG performance models. ² Not available for GLE Coupé.





Made-to-measure. The optional extras.

Be it fine details, a unique atmosphere or refined technical solutions – the possibilities are almost endless. Browse here in the brochure, on the price list or at www.mercedes-benz.com – and design your GLE or your GLE Coupé exactly how you want it.

THE BEST FOR YOUR GLE OR YOUR GLE COUPÉ

- 1 Climb aboard and feel at home – with its pleasant, indirect light the **ambient lighting**¹ creates an unrivalled sense of well-being throughout the interior. Three different colours are available to achieve the desired lighting mood. The brightness can be dimmed in five stages.
- 2 The heated adaptive windscreen wiper system **MAGIC VISION CONTROL** gives the driver the best possible view. The washer fluid is sprayed directly in front of the wiper blades and wiped away without delay.
- 3 For optimum visibility on country roads and motorways, when turning or cornering, the **LED Intelligent Light System**² adapts automatically to light and driving conditions.
- 4 The **illuminated running boards**³ in aluminium look are mounted level with the side skirts and facilitate access via both the front and the rear doors. Slip-resistant rubber studs ensure a firm foothold.
- 5 The **ambient lighting feature with brand logo projection** below the side mirror makes it easy to get into and out of the vehicle safely in darkness.

¹ Standard for the GLE in conjunction with EXCLUSIVE interior. ² Standard for the GLE Coupé, Mercedes-AMG GLE 63 4MATIC and Mercedes-AMG GLE 63 S 4MATIC. ³ Illuminated running boards for GLE Coupé only.

Visionaries never look back. Why would they?

The **Parking Pilot**, available as an option, makes looking for somewhere to park much easier, as well as manoeuvring into or out of a parking space. When activated, it automatically steers the vehicle into parallel or end-on parking spaces, relieving the driver of the work of steering and braking. The **360° camera**, part of the optional **Parking package**, facilitates parking and manoeuvring with a realistic all-round view provided through the interaction of four networked cameras. The camera is switched on automatically when reverse gear is selected. Alternatively, it can be activated by the driver if required. A bird's-eye view of the vehicle and its surroundings can be shown on the multimedia system's display. Obstacles below the window line are also visible to the driver. If the driver does not wish to use the Parking Pilot with PARKTRONIC, the electronic Parking Assist PARKTRONIC monitors the front and rear areas when manoeuvring the vehicle and warns the driver if a risk of collision is detected.



That certain something extra. Genuine accessories.

The range of genuine accessories is as varied as the routes you will doubtless be taking. They cover almost every conceivable need for more enjoyable, pleasant and practical motoring.

ACCESSORIES HIGHLIGHTS

- 1 The lockable **rear cycle rack** can be easily mounted on the trailer coupling and allows the safe transport of two or three bikes. Thanks to an ingenious roller mechanism the tailgate can still be opened.
- 2 Roof boxes, bicycle racks or ski and snowboard racks – the **Alustyle Easy-Fix** roof rail carrier for the GLE and the **Alustyle Quickfix** basic carrier bars for the GLE Coupé can be combined with a number of different roof attachments.
- 3 For an elegantly exclusive appearance: **10-spoke light-alloy wheels**, painted matt black with a high-sheen finish, with 265/45 R 20 tyres (for GLE only).
- 4 Let the **illuminated Mercedes star** shine brightly. The star centred in the radiator grille of your Mercedes will light up courtesy of fibre-optic cables and LED technology when the vehicle is unlocked by remote control and when a door or the tailgate is opened (only functions when the engine is switched off, not in conjunction with the Driving Assistance Plus package and not in conjunction with the Distance Pilot DISTRONIC).
- 5 Real eye-catchers: the **10-spoke light-alloy wheels**, black with a high-sheen finish, with 265/40 R 21 tyres (for GLE in conjunction with AIRMATIC package only).

➤ **DISCOVER THE ENTIRE RANGE**

Now online at www.mercedes-benz-accessories.com





25R



03R



R55



06R



R41



R39



65R



R33

GLE wheels.

At home in every terrain. For a Mercedes-Benz, this also means mastering it with confidence and style. The GLE wheels: unimpressed by the surface beneath them, impressive from every angle.

STANDARD EQUIPMENT AND OPTIONAL EXTRAS

25R 10-spoke light-alloy wheels with 235/65 R 17 tyres (standard for GLE 250 d, GLE 250 d 4MATIC and GLE 350 d 4MATIC)

R41 10-spoke light-alloy wheels with 255/55 R 18 tyres (standard for GLE 400 4MATIC; option for GLE 250 d, GLE 250 d 4MATIC and GLE 350 d 4MATIC)

03R 7-spoke light-alloy wheels with 255/55 R 18 tyres (option for GLE 250 d, GLE 250 d 4MATIC, GLE 350 d 4MATIC and GLE 400 4MATIC)

R39 5-spoke light-alloy wheels, painted titanium silver, with 255/50 R 19 tyres (option)

R55 5-twin-spoke light-alloy wheels, painted titanium silver, with 255/50 R 19 tyres (option)

65R 5-twin-spoke light-alloy wheels, painted himalayas grey, with 255/50 R 19 tyres (standard for GLE 500 e 4MATIC and GLE 500 4MATIC; option for GLE 250 d, GLE 250 d 4MATIC, GLE 350 d 4MATIC and GLE 400 4MATIC)

06R 7-spoke light-alloy wheels, painted himalayas grey with a high-sheen finish, with 255/50 R 19 tyres (option)

R33 5-twin-spoke light-alloy wheels, painted titanium silver, with 265/45 R 20 tyres (option)

29R 5-spoke light-alloy wheels, painted himalayas grey with a high-sheen finish, with 265/45 R 20 tyres (option)



29R



688



683



73

692



775



755



689



07R

AMG

775 AMG 5-spoke light-alloy wheels, painted black with a high-sheen finish, with 265/45 R 20 tyres (part of the Night package, standard for Mercedes-AMG GLE 43 4MATIC)

688 AMG multi-spoke light-alloy wheels, painted titanium grey with a high-sheen finish, with 265/45 R 20 tyres (standard for Mercedes-AMG GLE 63 4MATIC; no-cost option for Mercedes-AMG GLE 63 S 4MATIC)

755 AMG 5-twin-spoke light-alloy wheels, painted titanium grey with a high-sheen finish, with 265/40 R 21 tyres (option in conjunction with AIRMATIC package)

683 AMG 5-twin-spoke light-alloy wheels, painted black with a high-sheen finish, with 265/40 R 21 tyres (option in conjunction with AIRMATIC package)

689 AMG cross-spoke light-alloy wheels, painted titanium grey with a high-sheen finish, with 295/35 R 21 tyres (standard for Mercedes-AMG GLE 63 S 4MATIC; option for Mercedes-AMG GLE 63 4MATIC)

692 AMG cross-spoke light-alloy wheels, painted matt black and with a high-sheen rim flange, with 295/35 R 21 tyres (option for Mercedes-AMG GLE 63 4MATIC and Mercedes-AMG GLE 63 S 4MATIC)

EX FACTORY ACCESSORIES

07R 5-twin-spoke light-alloy wheels, with a high-sheen finish, with 265/40 R 21 tyres (option in conjunction with AIRMATIC package)

FURTHER WHEELS

can be found in our accessories range at www.mercedes-benz-accessories.com or are available directly from your authorised Mercedes-Benz dealer.



74

R33



R76 684



R77



650 674



GLE Coupé wheels.

Wheels are indispensable on technical grounds, of course. But on an emotional level, too, perfect wheels are an absolutely crucial ingredient of many people's dream car. With this in mind, we have put together a particularly large and diverse selection for you.

STANDARD EQUIPMENT AND OPTIONAL EXTRAS

- R33 5-twin-spoke light-alloy wheels, painted himalayas grey with a high-shine finish, with 275/50 R 20 tyres (option for GLE 350 d 4MATIC Coupé, GLE 400 4MATIC Coupé and GLE 500 4MATIC Coupé)
- R77 5-twin-spoke light-alloy wheels, painted vanadium silver, with 275/45 R 21 front tyres and 315/40 R 21 rear tyres (option for GLE 350 d 4MATIC Coupé, GLE 400 4MATIC Coupé and GLE 500 4MATIC Coupé)

- R76 5-spoke light-alloy wheels, painted himalayas grey with a high-shine finish, with 275/45 R 21 front tyres and 315/40 R 21 rear tyres (option for GLE 350 d 4MATIC Coupé, GLE 400 4MATIC Coupé and GLE 500 4MATIC Coupé)

AMG

- 650 AMG 5-twin-spoke light-alloy wheels, painted titanium grey with a high-shine finish, with 275/45 R 21 front tyres and 315/40 R 21 rear tyres (part of the AMG Line Exterior)
- 684 AMG 5-twin-spoke light-alloy wheels, painted black with a high-shine finish, with 275/45 R 21 front tyres and 315/40 R 21 rear tyres (part of the Night package, option for Mercedes-AMG GLE 43 4MATIC Coupe)



667



759 680



75



671



676 81R



674 AMG 10-spoke light-alloy wheels, painted titanium grey with a high-sheen finish, with 285/45 R 21 front tyres and 325/40 R 21 rear tyres (standard for Mercedes-AMG GLE 63 4MATIC Coupé, no-cost option for Mercedes-AMG GLE 63 S 4MATIC Coupé)

667 AMG multi-spoke light-alloy wheels, painted titanium grey with a high-sheen finish, with 285/40 R 22 front tyres and 325/35 R 22 rear tyres (option in conjunction with AMG Line Exterior, AIRMATIC package, ACTIVE CURVE SYSTEM and for Mercedes-AMG GLE 43 4MATIC Coupé)

671 AMG 5-twin-spoke light-alloy wheels, painted black with a high-sheen finish, with 285/40 R 22 front tyres and 325/35 R 22 rear tyres (option for Mercedes-AMG GLE 43 4MATIC Coupé)

759 AMG multi-spoke light-alloy wheels, painted black with a high-sheen finish, with 285/40 R 22 front tyres and 325/35 R 22 rear tyres (option in conjunction with AMG Line Exterior, AIRMATIC package, ACTIVE CURVE SYSTEM and for Mercedes-AMG GLE 43 4MATIC Coupé)

676 AMG cross-spoke light-alloy wheels, painted titanium grey with a high-sheen finish, with 285/40 R 22 front tyres and 325/35 R 22 rear tyres (option for Mercedes-AMG GLE 63 4MATIC Coupé, standard for Mercedes-AMG GLE 63 S 4MATIC Coupé)

680 AMG cross-spoke light-alloy wheels, painted matt black with a high-sheen rim flange, with 285/40 R 22 front tyres and 325/35 R 22 rear tyres (option for Mercedes-AMG GLE 63 4MATIC Coupé and Mercedes-AMG GLE 63 S 4MATIC Coupé)

EX FACTORY ACCESSORIES

81R 5-twin-spoke light-alloy wheels, painted tremolite grey metallic with a high-sheen finish, with 275/45 R 21 front tyres and 315/40 R 21 rear tyres (option for GLE 350 d 4MATIC Coupé, GLE 400 4MATIC Coupé and GLE 500 4MATIC Coupé)

FURTHER WHEELS

can be found in our accessories range at www.mercedes-benz-accessories.com or are available directly from your authorised Mercedes-Benz dealer.

GLE technical data.

| |
|--|
| Cylinder arrangement/number |
| Displacement (cc) |
| Rated output ¹ in kW (hp) at rpm |
| Rated output ¹ of electric motor in kW (hp) at rpm |
| System output (kW (hp) at rpm) |
| Rated torque ¹ (Nm at rpm) |
| Rated torque ¹ of electric motor (Nm at rpm) |
| System torque (Nm at rpm) |
| Transmission |
| Acceleration 0–100 km/h (s) |
| Top speed (km/h) |
| Tyres/wheels – front, rear |
| Fuel |
| Fuel consumption ³ (l/100 km) |
| Urban |
| Extra-urban |
| Combined |
| Electric power consumption, weighted (kWh/100 km) ⁴ |
| Electric range (km) ⁴ |
| CO ₂ emissions ³ combined (g/km) |
| Emissions class ⁵ /efficiency class ⁶ |
| Tank capacity (optional)/incl. reserve of (l) |
| Luggage compartment capacity ⁷ (VDA) (l) |
| Turning circle (m) |
| Kerb weight ⁸ /payload (kg) |
| Permissible gross vehicle weight (kg) |
| Perm. towing capacity, unbraked/braked [at 12%] (kg) |

The best for the engine:
Mercedes-Benz genuine engine oils.

Diesel engines

| GLE 250 d | GLE 250 d 4MATIC | GLE 350 d 4MATIC |
|----------------|------------------|------------------|
| R/4 | R/4 | V/6 |
| 2143 | 2143 | 2987 |
| 150 (204)/3800 | 150 (204)/3800 | 190 (258)/3400 |
| – | – | – |
| – | – | – |
| 480/1600–2000 | 500/1600–1800 | 620/1600–2400 |
| – | – | – |
| – | – | – |
| 9G-TRONIC | 9G-TRONIC | 9G-TRONIC |
| 8.6 | 8.6 | 7.1 |
| 210 | 210 | 225 |
| 235/65 R 17 | 235/65 R 17 | 235/65 R 17 |
| Diesel | Diesel | Diesel |
| 6.1–5.9 | 6.6–6.3 | 7.3–7.2 |
| 5.3–5.0 | 5.5–5.3 | 6.2–5.9 |
| 5.6–5.4 | 5.9–5.7 | 6.6–6.4 |
| – | – | – |
| – | – | – |
| 146–140 | 156–149 | 179–169 |
| Euro 6/A+ | Euro 6/A | Euro 6/B |
| 70 (93)/11.0 | 93/12.0 | 93/12.0 |
| 690–2010 | 690–2010 | 690–2010 |
| 11.80 | 11.80 | 11.80 |
| 2075/775 | 2165/785 | 2185/765 |
| 2850 | 2950 | 2950 |
| 750/2500 | 750/2950 | 750/3500 |

¹ Figures for rated output and rated torque in accordance with Directive (EC) No. 595/2009 in the currently applicable version. ² Electronically governed. ³ The figures given for fuel consumption and CO₂ emissions were determined in accordance with the prescribed measuring process (§ 2 Nos. 5, 6, 6a Pkw-EnVKV (German ordinance on fuel efficiency labelling for passenger cars) as amended. The figures are not based on an individual vehicle and do not constitute part of the product offer; they are provided solely for purposes of comparison between different vehicle models. Figures vary according to wheels/tyres. ⁴ Figures relate to electric motor. ⁵ Classification applies within European Union only. May vary from country to country. ⁶ Determined on the basis of the measured CO₂ emissions, taking into account the mass of the vehicle.

Petrol engines

| GLE 400 4MATIC | GLE 500 4MATIC | Mercedes-AMG GLE 43 4MATIC | Mercedes-AMG GLE 63 4MATIC | Mercedes-AMG GLE 63 S 4MATIC |
|---------------------|---------------------|----------------------------|-------------------------------|-------------------------------|
| V/6 | V/8 | V/6 | V/8 | V/8 |
| 2996 | 4663 | 2996 | 5461 | 5461 |
| 245 (333)/5250-6000 | 335 (455)/5250-5500 | 287 (390)/6100 | 410 (557)/5750 | 430 (585)/5500 |
| - | - | - | - | - |
| - | - | - | - | - |
| 480/1600-4000 | 700/1800-4000 | 520/2500-5000 | 700/1750-5500 | 760/1750-5250 |
| - | - | - | - | - |
| - | - | - | - | - |
| 9G-TRONIC | 9G-TRONIC | 9G-TRONIC | AMG SPEEDSHIFT PLUS 7G-TRONIC | AMG SPEEDSHIFT PLUS 7G-TRONIC |
| 6.0 | 5.1 | 5.7 | 4.3 | 4.2 |
| 247 | 250 ² | 250 ² | 250 ² | 250 ² |
| 255/55 R 18 | 255/50 R 19 | 265/45 R 20 | 265/45 R 20 | 295/35 R 21 |
| Premium petrol | Premium petrol | Super Plus petrol | Super Plus petrol | Super Plus petrol |
| 11.1-10.8 | 14.3-14.0 | 10.9 | 15.7 | 15.7 |
| 7.4-7.1 | 8.4-8.3 | 7.2 | 9.6 | 9.6 |
| 8.7-8.5 | 10.6-10.4 | 8.6 | 11.8 | 11.8 |
| - | - | - | - | - |
| - | - | - | - | - |
| 204-197 | 249-243 | 199 | 276 | 276 |
| Euro 6/C | Euro 6/E | Euro 6/C | Euro 6/F | Euro 6/F |
| 93/12.0 | 93/12.0 | 93/12.0 | 93/14.0 | 93/14.0 |
| 690-2010 | 690-2010 | 690-2010 | 690-2010 | 690-2010 |
| 11.80 | 11.80 | 11.80 | 11.80 | 11.80 |
| 2150/750 | 2245/705 | 2180/750 | 2345/705 | 2345/705 |
| 2900 | 2950 | 2930 | 3050 | 3050 |
| 750/3500 | 750/3500 | 750/3500 | 750/3050 | 750/3050 |

Plug-in hybrid

| GLE 500 e 4MATIC |
|-------------------------------------|
| V/6 |
| 2996 |
| 245 (333)/5250-6000 |
| 85 (116)/3500 |
| 325 (442)/5250-5500 |
| 480/1600-4000 |
| 340/0-2000 |
| 650/n/a |
| 7G-TRONIC PLUS |
| 5.3 |
| 245 ⁹ /130 ¹⁰ |
| 255/50 R 19 |
| Premium petrol |
| - |
| - |
| 3.7-3.3 ¹¹ |
| 18.0-16.7 |
| 30 ¹¹ |
| 84-78 |
| Euro 6/A+ |
| 80/10.0 |
| 480-1800 |
| 11.80 |
| 2465/585 |
| 3050 |
| 750/2000 |

⁷ Figures in accordance with Directive 2007/46/EC in its currently applicable version. ⁸ Kerb weight figures in accordance with Directive 92/21/EC in its currently applicable version (mass in running order, fuel tank 90%, with driver, 68 kg, and luggage, 7 kg) for standard-specification vehicles. Optional extras and accessories will generally increase this figure and reduce the payload capacity accordingly. ⁹ Applies with fully charged HV battery only. ¹⁰ Maximum speed in electric mode. ¹¹ Figures in real-life driving may differ from the certified standardised values. Real-life figures are influenced by numerous individual factors, such as individual driving style, environmental conditions and route characteristics. Further technical data are to be found at www.mercedes-benz.com

GLE Coupé technical data.

| | | | |
|--|-------------------------------|-----------------------------|-----------------------------|
| | Diesel engine | Petrol engines | |
| | GLE 350 d 4MATIC Coupé | GLE 400 4MATIC Coupé | GLE 500 4MATIC Coupé |
| Cylinder arrangement/number | V/6 | V/6 | V/8 |
| Displacement (cc) | 2987 | 2996 | 4663 |
| Rated output ¹ in kW (hp) at rpm | 190 (258)/3400 | 245 (333)/5250–6000 | 335 (455)/5250–5500 |
| Rated torque ¹ (Nm at rpm) | 620/1600–2400 | 480/1600–4000 | 700/1800–4000 |
| Transmission | 9G-TRONIC | 9G-TRONIC | 9G-TRONIC |
| Acceleration 0–100 km/h (s) | 7.0 | 5.9 | 4.9 |
| Top speed (km/h) | 226 | 247 | 250 ² |
| Tyres/wheels – front, rear | 275/50 R 20 | 275/50 R 20 | 275/50 R 20 |
| Fuel | Diesel | Premium petrol | Premium petrol |
| Fuel consumption ³ (l/100 km) | | | |
| Urban | 8.0–7.5 | 11.3–10.7 | 14.6–14.2 |
| Extra-urban | 6.7–6.4 | 7.7–7.4 | 8.8–8.4 |
| Combined | 7.2–6.9 | 9.0–8.7 | 10.9–10.5 |
| CO ₂ emissions ³ combined (g/km) | 189–180 | 211–199 | 254–246 |
| Emission class ⁴ /efficiency class ⁵ | Euro 6/B | Euro 6/C | Euro 6/E |
| Tank capacity/incl. reserve of (l) | 93/12.0 | 93/12.0 | 93/12.0 |
| Luggage compartment capacity ⁶ (VDA) (l) | 650–1720 | 650–1720 | 650–1720 |
| Turning circle (m) | 11.80 | 11.80 | 11.80 |
| Kerb weight ⁷ /payload (kg) | 2275/625 | 2185/665 | 2285/615 |
| Permissible gross vehicle weight (kg) | 2900 | 2850 | 2900 |
| Perm. towing capacity, unbraked/braked [at 12%] (kg) | 750/2900 | 750/2850 | 750/3500 |

The best for the engine:
Mercedes-Benz genuine engine oils.

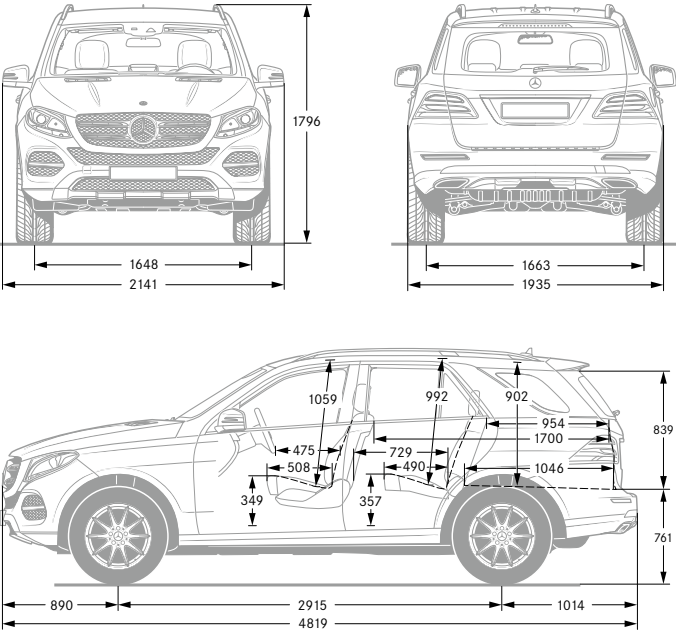
¹ Figures for rated output and rated torque in accordance with Directive (EC) No. 595/2009 in the currently applicable version. ² Electronically governed. ³ The figures given for fuel consumption and CO₂ emissions were determined in accordance with the prescribed measuring process (§ 2 Nos. 5, 6, 6a Pkw-EnVKV (German ordinance on fuel efficiency labelling for passenger cars) as amended. The figures are not based on an individual vehicle and do not constitute part of the product offer; they are provided solely for purposes of comparison between different vehicle models. Figures vary according to wheels/tyres. ⁴ Classification

Petrol engines

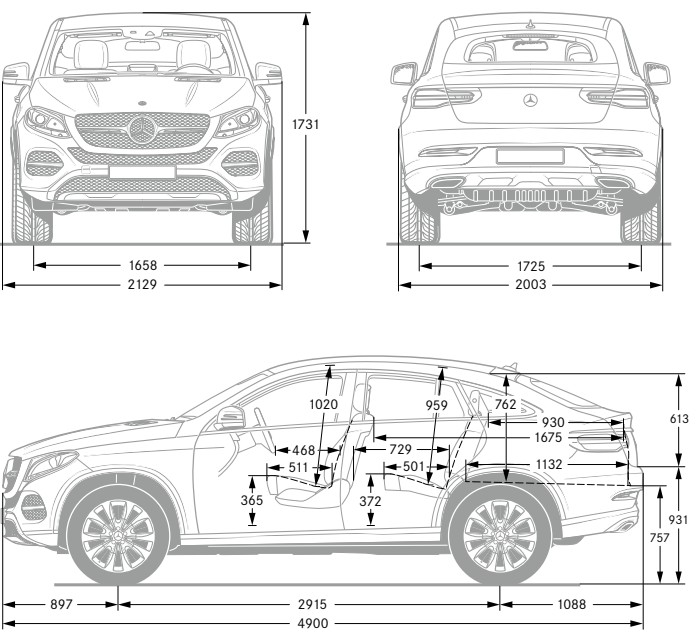
| Mercedes-AMG GLE 43 4MATIC Coupé | Mercedes-AMG GLE 63 4MATIC Coupé | Mercedes-AMG GLE 63 S 4MATIC Coupé |
|----------------------------------|----------------------------------|------------------------------------|
| V/6 | V/8 | V/8 |
| 2996 | 5461 | 5461 |
| 287 (390)/5500–6000 | 410 (557)/5750 | 430 (585)/5500 |
| 520/1800–4000 | 700/1750–5500 | 760/1750–5250 |
| 9G-TRONIC | AMG SPEEDSHIFT PLUS 7G-TRONIC | AMG SPEEDSHIFT PLUS 7G-TRONIC |
| 5.7 | 4.3 | 4.2 |
| 250 ² | 250 ² | 250 ² |
| 275/45 R 21, 315/40 R 21 | 285/45 R 21, 325/40 R 21 | 285/40 R 22, 325/35 R 22 |
| Super Plus petrol | Super Plus petrol | Super Plus petrol |
| 11.7–11.3 | 15.8 | 15.8 |
| 8.1–7.7 | 9.7 | 9.7 |
| 9.4–8.9 | 11.9 | 11.9 |
| 219–209 | 278 | 278 |
| Euro 6/C | Euro 6/F | Euro 6/F |
| 93/12.0 | 93/14.0 | 93/14.0 |
| 650–1720 | 650–1720 | 650–1720 |
| 11.80 | 11.80 | 11.80 |
| 2240/660 | 2350/700 | 2350/700 |
| 2880 | 3050 | 3050 |
| 750/3500 | 750/3500 | 750/3500 |

applies with the European Union only. May vary from country to country. ⁵ Determined on the basis of the measured CO₂ emissions, taking into account the mass of the vehicle. ⁶ Figures in accordance with Directive 2007/46/EC in its currently applicable version. ⁷ Kerb weight figures in accordance with Directive 92/21/EC in its currently applicable version (mass in running order, fuel tank 90%, with driver, 68 kg, and luggage, 7 kg) for standard-specification vehicles. Optional extras and accessories will generally increase this figure, reducing the payload accordingly. Further technical data are available at www.mercedes-benz.com

GLE dimensions.



GLE Coupé dimensions.



All dimensions in millimetres. The dimensions shown are mean values and apply to standard-specification, unladen vehicles.

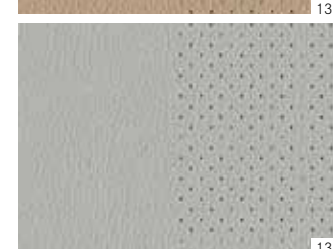
Upholstery and trim.

| Upholstery | GLE | GLE Coupé |
|---|-----|-----------|
| 011 black | ● | — |
| 111 black ^{1, 2} | ● | — |
| 114 espresso brown ^{1, 2} | ● | — |
| 115 ginger beige/espresso brown ^{1, 2} | ● | — |
| 121 black ^{1, 3, 4} | ● | ● |
| 135 ginger beige/black ⁴ | — | ● |
| 138 crystal grey/black ⁴ | — | ● |
| 211 black ^{1, 5} | ● | ● |
| 215 ginger beige/espresso brown ^{1, 5} | ● | — |
| 224 saddle brown/black ^{1, 5} | ● | ● |
| 225 ginger beige/black ^{1, 5} | — | ● |
| 228 crystal grey/black ^{1, 5} | ● | ● |
| 245 ginger beige/black ^{1, 5} | ● | — |
| 531 black ⁶ | ● | ● |
| 534 espresso brown/black ^{6, 7} | ● | ● |
| 535 porcelain/black ^{6, 7} | ● | ● |
| 541 black with grey contrasting topstitching ⁷ | ● | ● |
| 811 black pearl/black ^{1, 3} | ● | ● |
| 821 black pearl/black with red contrasting topstitching ^{1, 3} | — | ● |
| 831 black ⁸ | ● | ● |
| 834 espresso brown/black ⁸ | ● | ● |
| 835 porcelain/black ⁸ | ● | ● |
| 855 porcelain/black ^{1, 3} | ● | ● |
| 954 espresso brown ¹ | ● | — |
| 955 porcelain/black ¹ | ● | ● |
| Trim | GLE | GLE Coupé |
| 739 light longitudinal-grain aluminium | ● | ● |
| 734 high-gloss brown eucalyptus wood ¹ | ● | ● |
| 731 high-gloss brown burr walnut wood ¹ | ● | — |
| H09 open-pore brown ash wood ¹ | ● | ● |
| 729 high-gloss black poplar wood ¹ | ● | ● |
| H21 black piano lacquer ¹ | ● | ● |
| H10 AMG carbon-fibre/black piano lacquer ¹ | ● | ● |

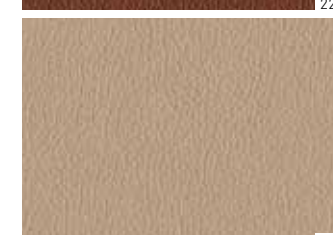
ARTICO man-made leather/fabric



ARTICO man-made leather



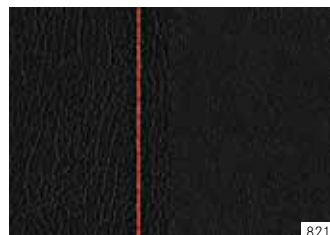
Leather



Nappa leather/leather



811

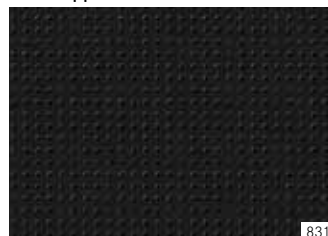


821



855

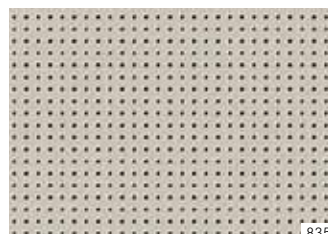
AMG nappa leather



831

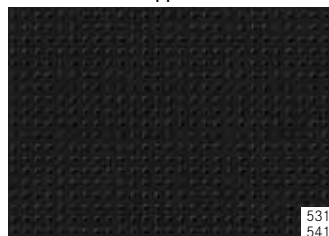


834

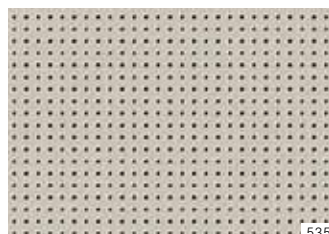


835

AMG Exclusive nappa leather

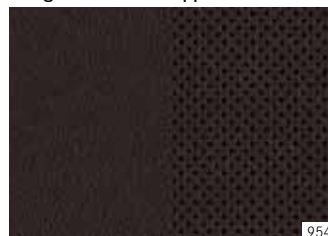
531
541

534



535

designo Exclusive nappa leather



954



955

Trim



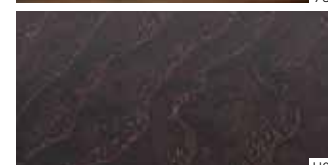
739



734



731



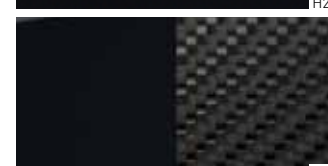
H09



729



H21



H10

● Available | – Not available

¹ Option. ² Standard for GLE 500 4MATIC. ³ Standard in conjunction with AMG Line Interior. ⁴ Standard for GLE Coupé. ⁵ Standard in conjunction with EXCLUSIVE Interior. ⁶ Option for Mercedes-AMG GLE 63 4MATIC and Mercedes-AMG GLE 63 4MATIC Coupé. ⁷ Standard for Mercedes-AMG GLE 63 S 4MATIC and Mercedes-AMG GLE 63 S 4MATIC Coupé. ⁸ Standard for Mercedes-AMG GLE 63 4MATIC and Mercedes-AMG GLE 63 4MATIC Coupé.

Paintwork.

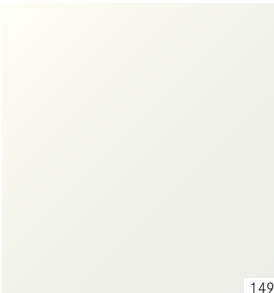
| | |
|------------------------------------|-------------------------------|
| Non-metallic paints | |
| 040 | black |
| 149 | polar white |
| Metallic paints¹ | |
| 197 | obsidian black |
| 775 | iridium silver |
| 796 | citrine brown |
| 890 | cavansite blue |
| 896 | brilliant blue |
| 988 | diamond silver |
| 992 | selenite grey |
| designo paints¹ | |
| 799 | designo diamond white bright |
| 996 | designo hyacinth red metallic |

¹ Optional extra.

Non-metallic paints



040



149

Metallic paints¹



197



775



796



890



896



988



992

designo paints¹



799



996



Mercedes-Benz is one of the founding partners of the “Laureus Sport for Good Foundation”.

Since the foundation was established in 2000, Mercedes-Benz has been supporting and promoting the aims and values of this worldwide non-profit-making programme: to use social sports projects to improve the lives of children and young people who are disadvantaged or suffering from illness. Laureus has become a fundamental element of Mercedes-Benz’s social responsibility. Every new Mercedes is an ambassador embodying these values. In buying a Mercedes you are supporting the “Laureus Sport for Good Foundation”.

Please note: changes may have been made to the product since this brochure went to press (04.01.2017). The manufacturer reserves the right to make changes to the design, form, colour and specification during the delivery period, provided these changes, while taking into account the interests of the vendor, can be deemed reasonable with respect to the purchaser. Where the vendor or the manufacturer uses symbols or numbers to describe an order or the subject of an order, no rights may be derived solely from these. The illustrations may show accessories and items of optional equipment which are not part of standard specification. Colours may differ slightly from those shown in the brochure, owing to the limitations of the printing process. This brochure is distributed internationally. It provides a general indication of the range of models, features, optional extras and/or colours available in various countries. Some of the models, features, optional extras and/or colours shown may not be available in your country or may only be available in a different specification. Additionally some models, features, optional extras and/or colours may only be available in combination with others. For current and more specific information in relation to the range of models, features, optional extras and/or colours available in your country, and their pricing, you should contact your nearest authorised Mercedes-Benz Passenger Car Dealer.

www.mercedes-benz.com

Take-back of end-of-life vehicles. At the end of its long life, you can return your GLE or GLE Coupé to us for environment-friendly disposal in accordance with the European Union (EU) End-Of-Life Vehicle Directive. But that day lies a long way off.

A network of vehicle take-back depots and dismantlers has been established to make it as easy as possible for you to return your vehicle. You can leave it at any of these points free of charge and, by so doing, make an important contribution to completing the recycling process and conserving resources.

For further information about the recycling and disposal of end-of-life vehicles and take-back conditions, please visit your national Mercedes-Benz website.